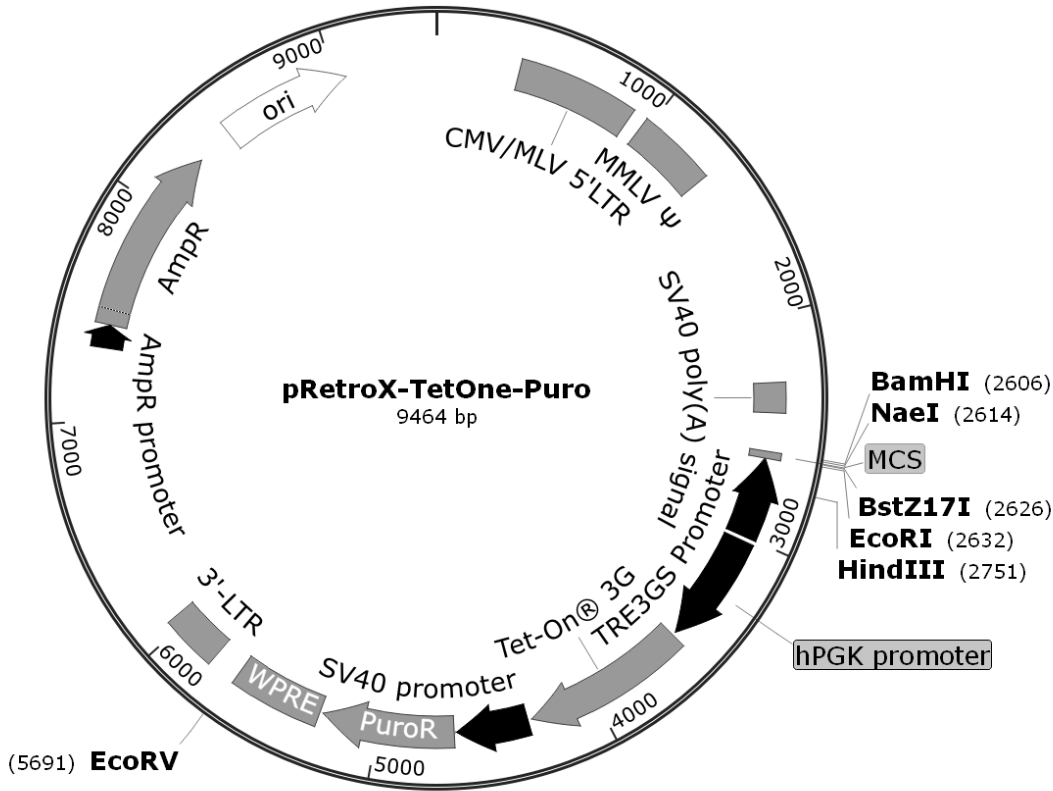


pRetroX-TetOne-Puro Vector Set

Catalog No.

634309 (Not sold separately)

Sold as a part of 634307



BamHI (2606)
NaeI (2614)
BstZ171 (2626)
EcoRI (2632)
HindIII (2751)

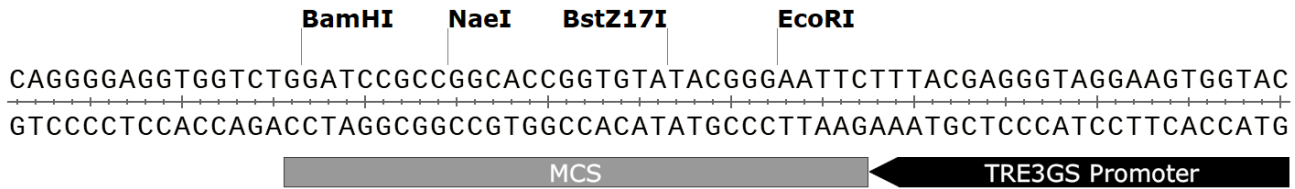


Figure 1. pRetroX-TetOne-Puro vector map and multiple cloning site.

Takara Bio USA, Inc.

1290 Terra Bella Avenue, Mountain View, CA 94043, USA
 U.S. Technical Support: techUS@takarabio.com

United States/Canada 800.662.2566 (030920)	Asia Pacific +1.650.919.7300	Europe +33.(0)1.3904.6880	Japan +81.(0)77.565.6999
--	---------------------------------	------------------------------	-----------------------------

Vector Map

pRetroX-TetOne-Puro Vector Set (Not sold separately)

Cat. No. 634309

Sold as a part of 634307

Location of Features (pRetroX-TetOne-Puro Vector)

- 5' LTR (5' long terminal repeat): 375–910
- Ψ (packaging signal): 973–1330
- SV40 poly(A) signal: 2297–2431
- MCS: 2606–2637
- P_{TRE3GS} (TRE3GS promoter): 2639–3003
- P_{hPGK} (human phosphoglycerate kinase 1 promoter): 3022–3532
- Tet-On[®] 3G (transactivator gene): 3551–4297
- SV40 promoter: 4315–4644
- Puro^R (puromycin resistance gene): 4653–5252
- WPRE (woodchuck hepatitis virus posttranscriptional regulatory element): 5269–5672
- 3' LTR (del in U3): 5802–6049
- Amp^R promoter: 7326–7420
- Amp^R (ampicillin resistance gene): 7431–8291
- ori (high-copy-number ColE1/pMB1/pBR322/pUC origin of replication): 8462–9050

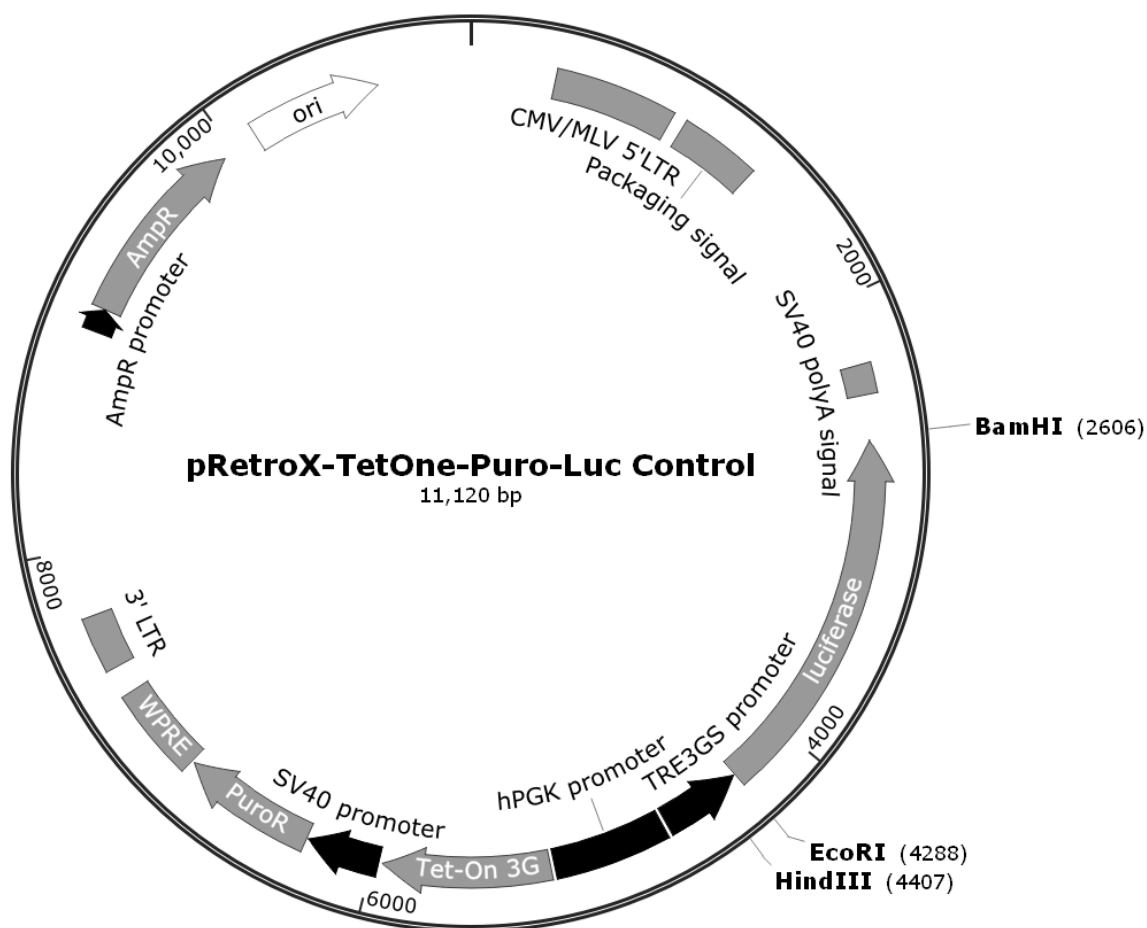


Figure 2. pRetroX-TetOne-Puro-Luc Control Vector map.

Location of Features (pRetroX-TetOne-Puro-Luc Control Vector)

- 5' LTR (5' long terminal repeat): 375–910
- Ψ (packaging signal): 973–1330
- SV40 poly(A) signal: 2297–2431
- Firefly luciferase: 2632–4284
- P_{TRE3GS} (TRE3GS promoter): 4294–4658
- P_{hPGK} (human phosphoglycerate kinase 1 promoter): 4678–5188
- Tet-On 3G (transactivator gene): 5207–5953
- SV40 promoter: 5971–6300
- Puro^R (puromycin resistance gene): 6309–6908
- WPRE (woodchuck hepatitis virus posttranscriptional regulatory element): 6925–7328
- 3' LTR (del in U3): 7458–7705
- Amp^R promoter: 8982–9086
- Amp^R (ampicillin resistance gene): 9087–9947
- ori (high-copy-number ColE1/pMB1/pBR322/pUC origin of replication): 10118–10706

Notice to Purchaser

Our products are to be used for research purposes only. They may not be used for any other purpose, including, but not limited to, use in drugs, *in vitro* diagnostic purposes, therapeutics, or in humans. Our products may not be transferred to third parties, resold, modified for resale, or used to manufacture commercial products or to provide a service to third parties without prior written approval of Takara Bio USA, Inc.

Your use of this product is also subject to compliance with any applicable licensing requirements described on the product's web page at takarabio.com. It is your responsibility to review, understand and adhere to any restrictions imposed by such statements.

©2011 Takara Bio Inc. All Rights Reserved.

All trademarks are the property of Takara Bio Inc. or its affiliate(s) in the U.S. and/or other countries or their respective owners. Certain trademarks may not be registered in all jurisdictions. Additional product, intellectual property, and restricted use information is available at takarabio.com.

This document has been reviewed and approved by the Quality Department.