

pRetroX-TRE3G

Catalog No(s).

631192, 631194(Not sold separately).
Sold as part of 631188, 631190.

Amount

20 μ l pRetroX-TRE3G Vector (500 ng/ μ l)

Lot Number

Specified on product label.

pRetroX-TRE3G Vector Information

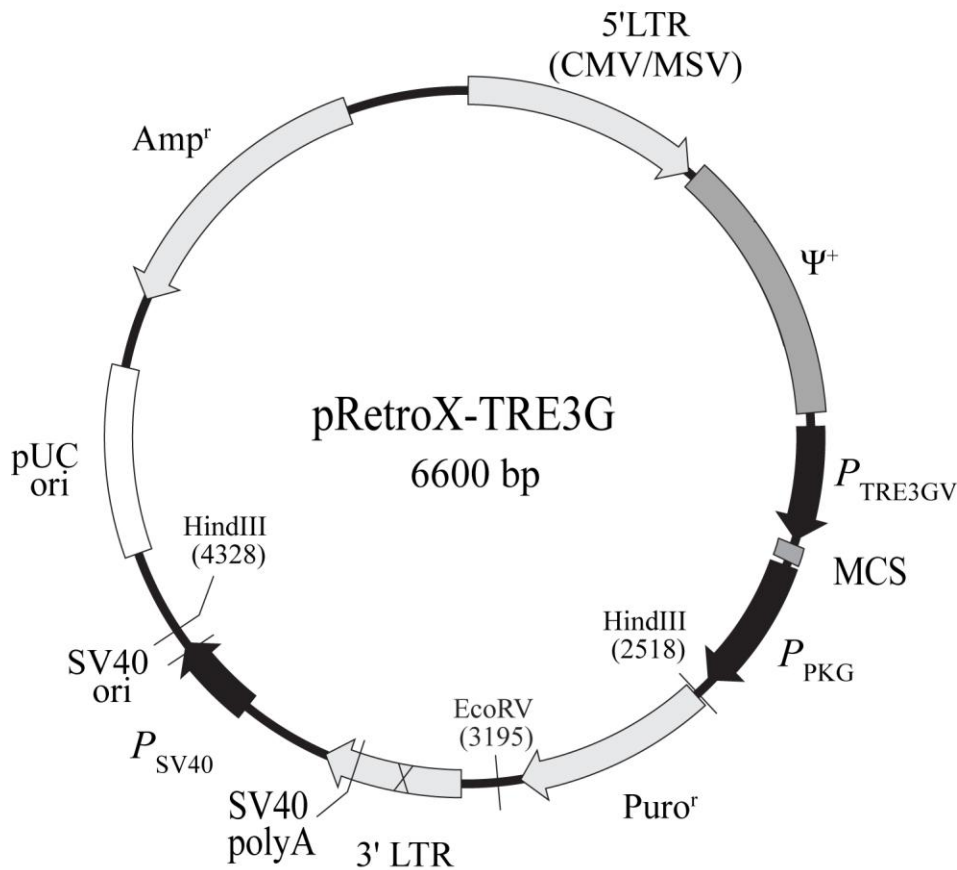


Figure 1. pRetroX-TRE3G vector map.

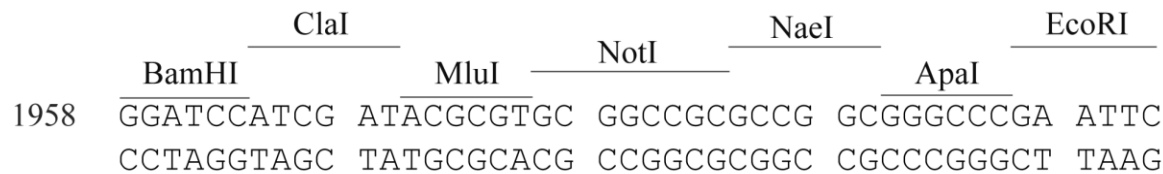


Figure 2. pRetroX-TRE3G multiple cloning site.

Clontech Laboratories, Inc.

A Takara Bio Company
1290 Terra Bella Avenue, Mountain View, CA 94043, USA
U.S. Technical Support: tech@clontech.com

United States/Canada	Asia Pacific	Europe	Japan
800.662.2566	+1.650.919.7300	+33.(0)1.3904.6880	+81.(0)77.543.6116
Last update: September 21, 2011			

Location of Features

- 5' LTR(CMV/MSV): 5' untranslated region with cytomegalovirus/mouse sarcoma virus hybrid promoter: 1–728
- $\psi+$ (extended packaging signal): 759–1568
- P_{TRE3GV} (TRE3GV promoter): 1611–1957
- MCS (multiple cloning site): 1958–2001
- P_{PGK} (phosphoglycerate kinase promoter): 2002–2505
- Puro^r (puromycin resistance gene): 2526–3125
- 3' LTR (3' long terminal repeat, containing a deletion in U3): 3306–3731
- SV40 polyA (SV40 poly A signal): 3633–3638
- P_{SV40} (SV40 promoter): 4011–4278
- SV40 ori (SV40 origin of replication): 4232–4297
- pUC ori (pUC origin of replication): 4588–5231
- Amp^r (ampicillin resistance gene): 5378–6238 (complementary)

Notice to Purchaser

Clontech products are to be used for research purposes only. They may not be used for any other purpose, including, but not limited to, use in drugs, *in vitro* diagnostic purposes, therapeutics, or in humans. Clontech products may not be transferred to third parties, resold, modified for resale, or used to manufacture commercial products or to provide a service to third parties without prior written approval of Clontech Laboratories, Inc.

Your use of this product is also subject to compliance with the licensing requirements described on the product's web page at <http://www.clontech.com>. It is your responsibility to review, understand and adhere to any restrictions imposed by these statements.

Retro-X, Clontech and the Clontech logo are trademarks of Clontech Laboratories, Inc. All other marks are the property of their respective owners. Certain trademarks may not be registered in all jurisdictions. Clontech is a Takara Bio Company. ©2011 Clontech Laboratories, Inc.

This document has been reviewed and approved by the Clontech Quality Assurance Department.