

pLVX-TetOne-Puro Vector Set

Catalog No(s).

631849 (Not sold separately)

Sold as a part of 631847

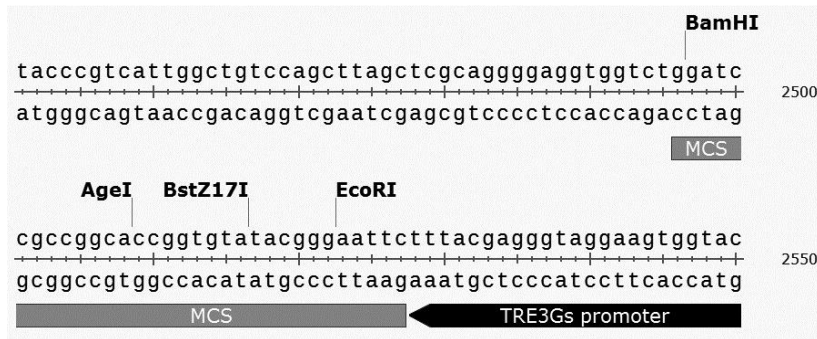
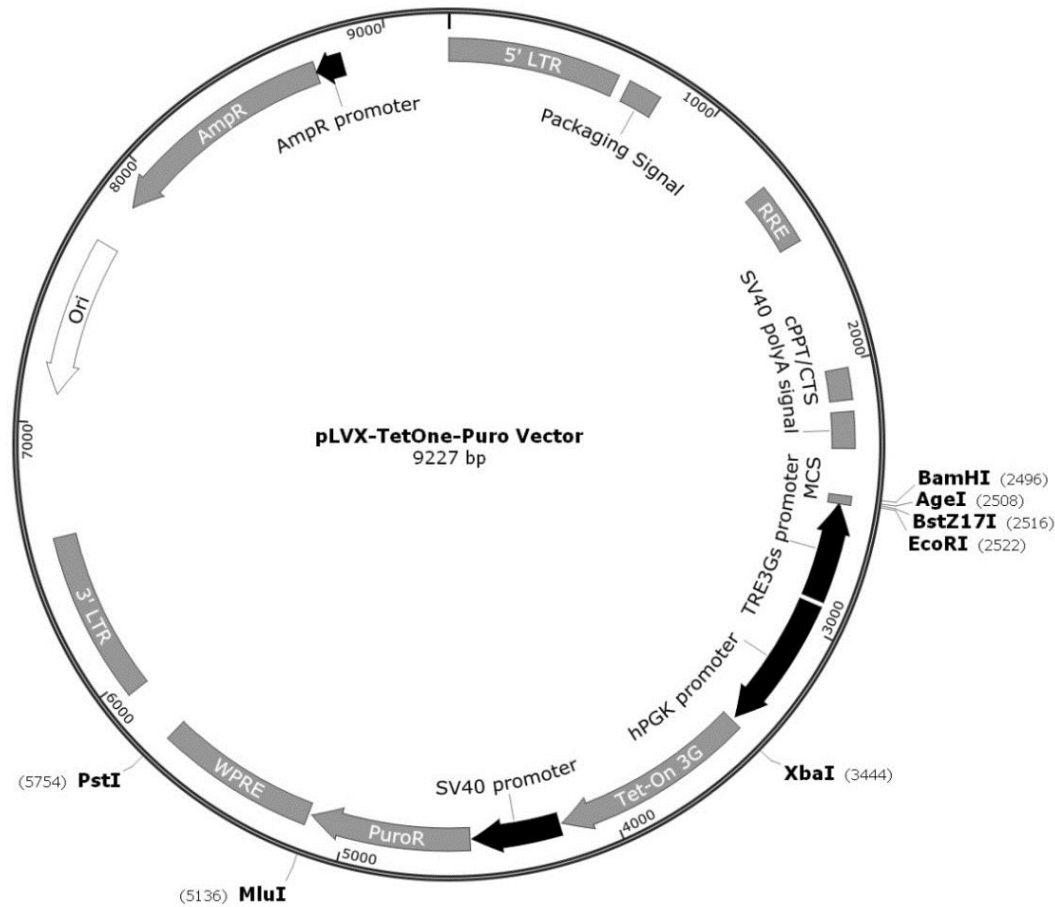


Figure 1. pLVX-TetOne-Puro vector map and multiple cloning site.

Clontech Laboratories, Inc.

A Takara Bio Company
 1290 Terra Bella Avenue, Mountain View, CA 94043, USA
 U.S. Technical Support: tech@clontech.com

United States/Canada 800.662.2566 (020514)	Asia Pacific +1.650.919.7300	Europe +33.(0)1.3904.6880	Japan +81.(0)77.543.6116
--	---------------------------------	------------------------------	-----------------------------

Vector Map

pLVX-TetOne-Puro Vector Set (Not sold separately)

Cat. No. 631849

Sold as a part of Cat. Nos. 631847

Location of Features (pLVX-TetOne-Puro Vector)

- 5' LTR (5' long terminal repeat): 1–635
- Ψ (packaging signal): 681–806
- RRE (rev-response element): 1303–1536
- cPPT/CTS (central polypurine tract/central termination sequence): 2028–2144
- SV40 poly(A) signal: 2187–2321
- MCS: 2496–2527
- P_{TRE3GS} (TRE3GS promoter): 2528–2892
- P_{hPGK} (human phosphoglycerate kinase 1 promoter): 2912–3422
- Tet-On® 3G (transactivator gene): 3441–4187
- P_{SV40} (SV40 promoter): 4198–4527
- PuroR (puromycin resistance gene): 4536–5135
- WPRE (woodchuck hepatitis virus posttranscriptional regulatory element): 5149–5737
- 3' LTR (3' long terminal repeat): 5945–6578
- Ori (high-copy-number ColE1/pMB1/pBR322/pUC origin of replication): 7109–7694
- Amp^R (ampicillin resistance gene): 7865–8725
- Amp^R promoter: 8726–8830 (complementary)

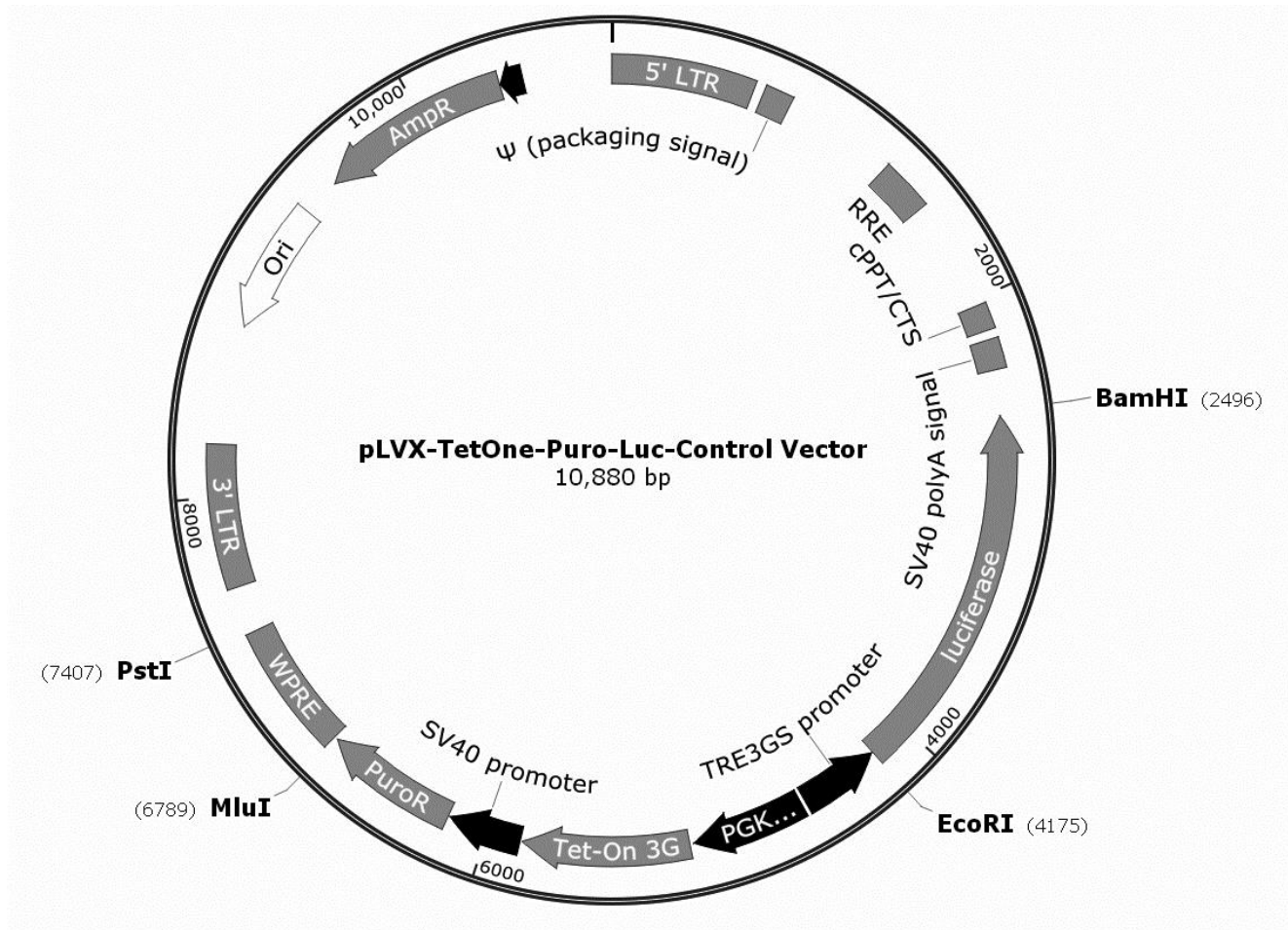


Figure 2. pLVX-TetOne-Puro-Luc Control Vector map.

Location of Features (pLVX-TetOne-Puro-Luc Control Vector)

- 5' LTR (5' long terminal repeat): 1–634
- Ψ (packaging signal): 681–806
- RRE (Rev-response element): 1303–1536
- cPPT/CTS (central polypurine tract/central termination sequence): 2028–2144
- SV40 poly(A) signal: 2187–2321
- Firefly luciferase: 2522–4147
- P_{TRE3GS} (TRE3GS promoter): 4181–4545
- P_{hPGK} (human phosphoglycerate kinase 1 promoter): 4565–5075
- Tet-On 3G (transactivator gene): 5094–5840
- P_{SV40} (SV40 promoter): 5851–6180
- PuroR (puromycin resistance gene): 6189–6788
- WPRE (woodchuck hepatitis virus posttranscriptional regulatory element): 6802–7390
- 3' LTR (3' long terminal repeat): 7598–8231
- Ori (high-copy-number ColE1/pMB1/pBR322/pUC origin of replication): 8762–9347
- Amp^R (ampicillin resistance gene): 9518–10,378 (complementary)
- Amp^R promoter: 10,379–10,483 (complementary)

Notice to Purchaser

Clontech® products are to be used for research purposes only. They may not be used for any other purpose, including, but not limited to, use in drugs, *in vitro* diagnostic purposes, therapeutics, or in humans. Clontech products may not be transferred to third parties, resold, modified for resale, or used to manufacture commercial products or to provide a service to third parties without prior written approval of Clontech Laboratories, Inc.

Your use of this product is also subject to compliance with the licensing requirements described on the product's web page at <http://www.clontech.com>. It is your responsibility to review, understand and adhere to any restrictions imposed by these statements.

Clontech, the Clontech logo, and Tet-On are trademarks of Clontech Laboratories, Inc. All other marks are the property of their respective owners. Certain trademarks may not be registered in all jurisdictions. Clontech is a Takara Bio Company. ©2014 Clontech Laboratories, Inc.

This document has been reviewed and approved by the Clontech Quality Assurance Department.