

pAdenoX-PRLS (Linear)

Catalog No(s).	Amount	Lot Number
632260 (Not sold separately). Sold as part of 632266	10 µl pAdenoX-PRLS (Linear) Vector (200 ng/µl)	Specified on product label.

pAdenoX-PRLS (Linear) Vector Information

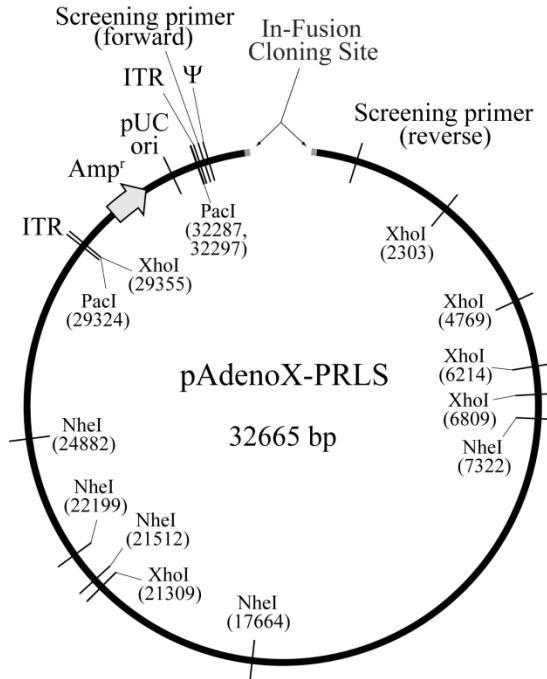


Figure 1. pAdenoX-PRLS (Linear) vector map.

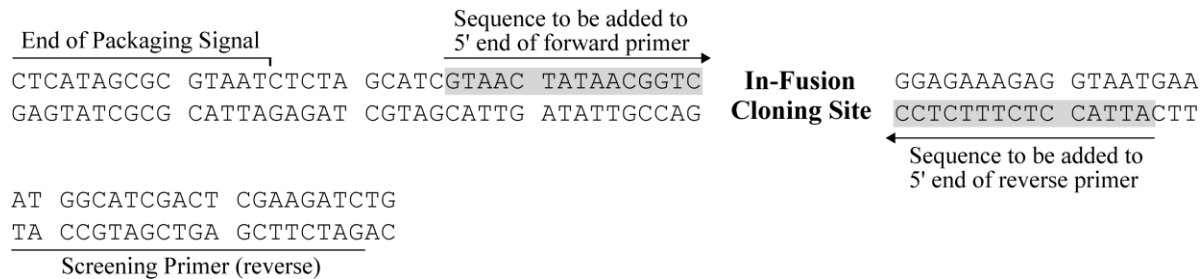


Figure 2. pAdenoX-PRLS (Linear) In-Fusion cloning site.

Location of Features

- Screening Primer (reverse) [complementary]: 19–38
- ITR (inverted terminal repeat): 29251–29310

Clontech Laboratories, Inc.

A Takara Bio Company
1290 Terra Bella Avenue, Mountain View, CA 94043, USA
U.S. Technical Support: tech@clontech.com

United States/Canada 800.662.2566
Asia Pacific +1.650.919.7300
Europe +33.(0)1.3904.6880
Japan +81.(0)77.543.6116
Late update: July 12, 2011

Vector Map

Cat. No(s). 632266

pAdenoX-PRLS (Linear)

- Amp^r (ampicillin resistance gene; β -lactamase): 30211–31071
- pUC origin of replication: 31716–31889
- ITR (inverted terminal repeat): 32300–32359
- Screening Primer (forward): 32403–32427
- Ψ (packaging signal): 32492–32640

NOTICE TO PURCHASER:

Clontech products are to be used for research purposes only. They may not be used for any other purpose, including, but not limited to, use in drugs, in vitro diagnostic purposes, therapeutics, or in humans. Clontech products may not be transferred to third parties, resold, modified for resale, or used to manufacture commercial products or to provide a service to third parties without prior written approval of Clontech Laboratories, Inc.

Your use of this product is also subject to compliance with the licensing requirements listed below and described on the product's web page at <http://www.clontech.com>. It is your responsibility to review, understand and adhere to any restrictions imposed by these statements.