

MSCV Vector Set

Catalog Nos.

631461 (Not sold separately)

Sold as a part of 634401

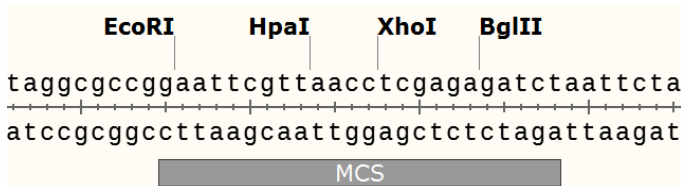
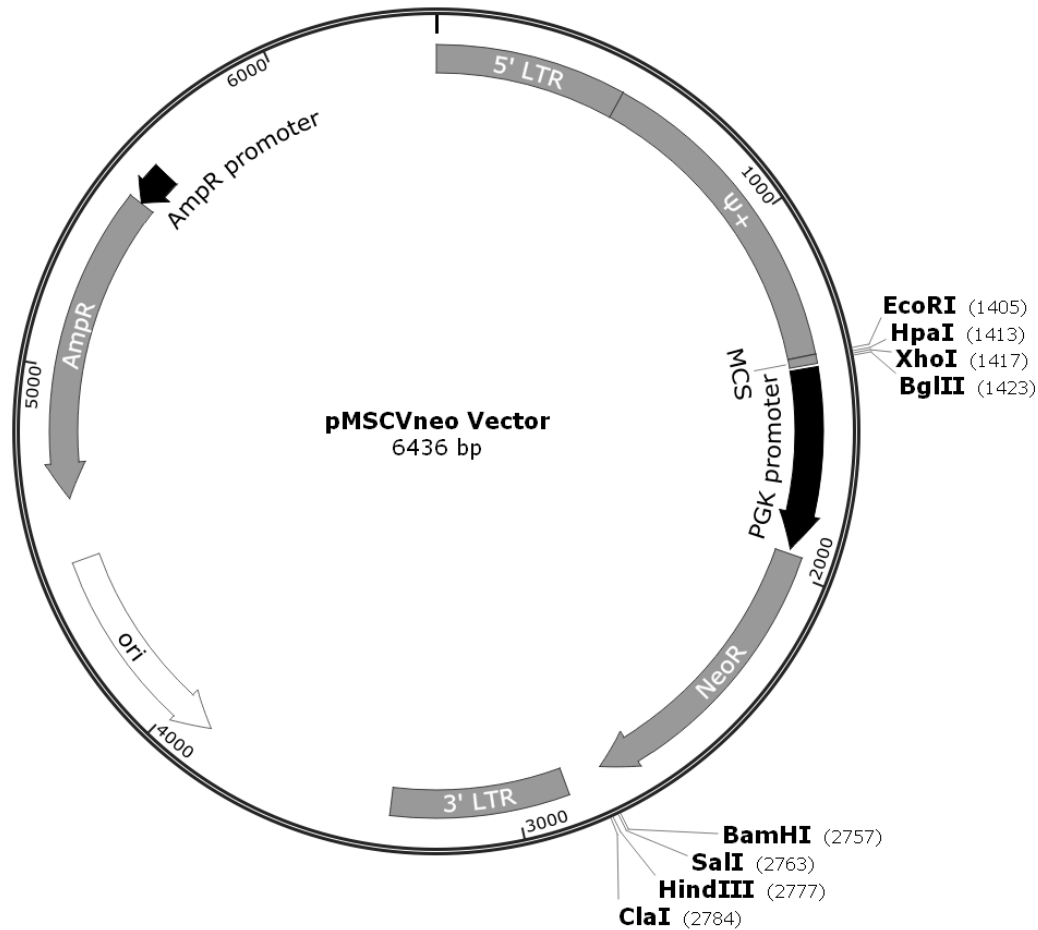


Figure 1. pMSCVneo Vector map and multiple cloning site.

Clontech Laboratories, Inc.

A Takara Bio Company
 1290 Terra Bella Avenue, Mountain View, CA 94043, USA
 U.S. Technical Support: tech@clontech.com

United States/Canada 800.662.2566 (112113)	Asia Pacific +1.650.919.7300	Europe +33.(0)1.3904.6880	Japan +81.(0)77.543.6116
--	---------------------------------	------------------------------	-----------------------------

Location of Features (pMSCVneo Vector)

- 5' LTR (5' long terminal repeat): 1–515
- Ψ^+ (extended packaging signal): 516–1403
- MCS: 1405–1428
- P_{PGK} (PGK promoter): 1438–1937
- Neo^R (neomycin resistance gene): 1951–2754
- 3' LTR (3' long terminal repeat): 2859–3342
- ori (high-copy-number ColE1/pMB1/pBR322/pUC origin of replication): 3883–4471
- Amp^R (ampicillin resistance gene): 4642–5502
- Amp^R promoter: 5503–5607
- See the “pMSCV Seq/PCR Primers” section for primer details.

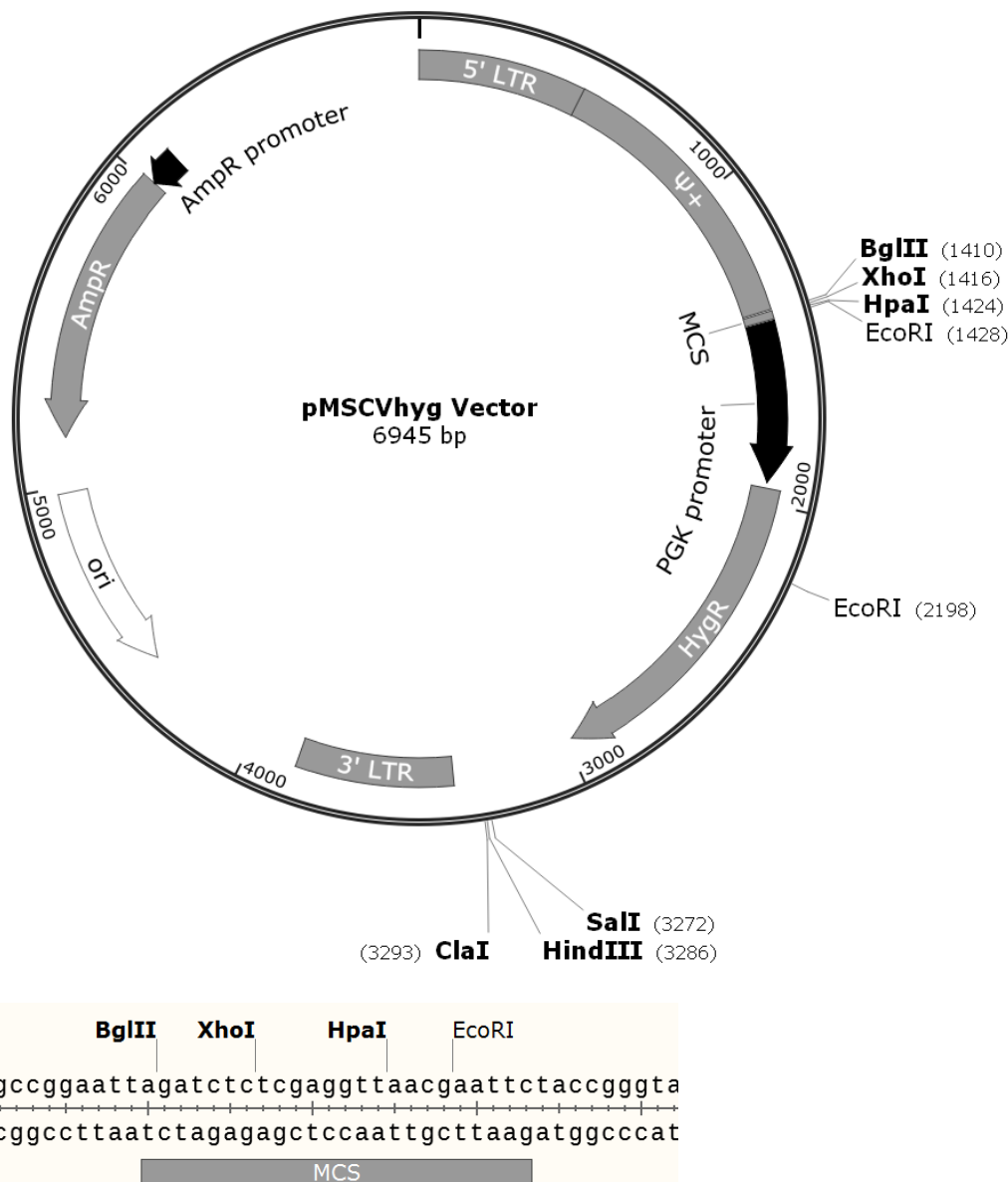


Figure 2. pMSCVhyg Vector map and multiple cloning site.

Location of Features (pMSCVhyg Vector)

- 5' LTR (5' long terminal repeat): 1–515
- Ψ^+ (extended packaging signal): 516–1403
- MCS: 1410–1433
- P_{PGK} (PGK promoter): 1438–1937
- HygR (hygromycin resistance gene): 1955–2980
- 3' LTR (3' long terminal repeat): 3368–3851
- ori (high-copy-number ColE1/pMB1/pBR322/pUC origin of replication): 4392–4980
- AmpR (ampicillin resistance gene): 5151–6011
- AmpR promoter: 6012–6116
- See the “pMSCV Seq/PCR Primers” section for primer details.

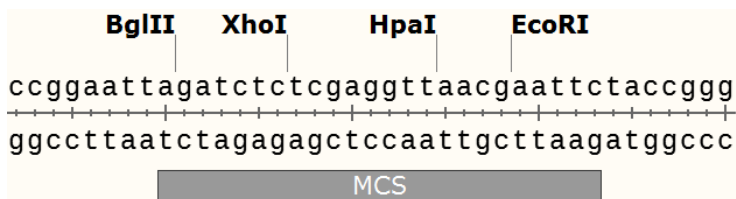
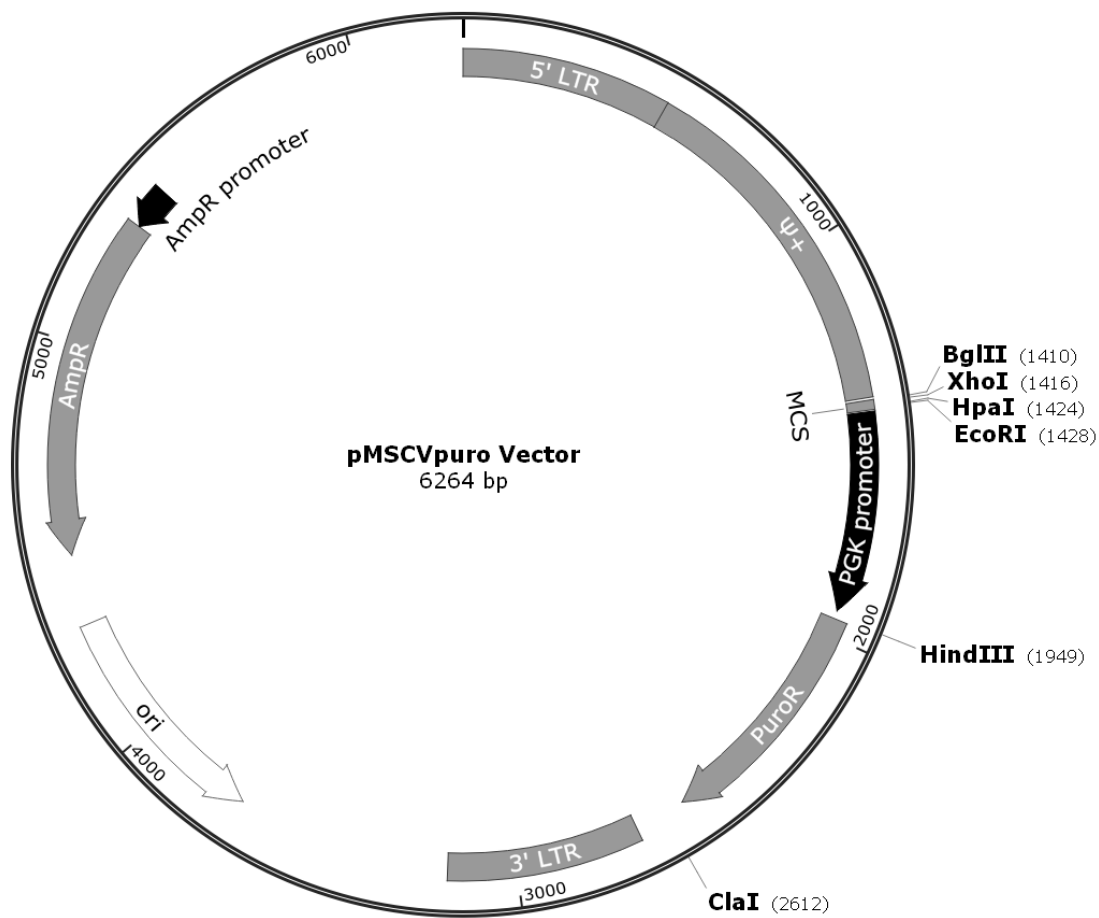


Figure 3. pMSCVpuro Vector map and multiple cloning site.

Location of Features (pMSCVpuro Vector)

- 5' LTR (5' long terminal repeat): 1–515
- Ψ^+ (extended packaging signal): 516–1403
- MCS: 1410–1433
- P_{PGK} (PGK promoter): 1438–1937
- PuroR (puromycin resistance gene): 1958–2557
- 3' LTR (3' long terminal repeat): 2687–3170
- ori (high-copy-number ColE1/pMB1/pBR322/pUC origin of replication): 3711–4299
- AmpR (ampicillin resistance gene): 4473–5330
- AmpR promoter: 5331–5435
- See the “pMSCV Seq/PCR Primers” section for primer details.

pMSCV Seq/PCR Primers

5' primer : 5'-CCCTTGAACCTCCTCGTTGACC-3'

3' primer : 5'-GAGACGTGCTACTTCCATTTGTC-3'

Figure 4. pMSCV Seq/PCR Primer sequences

Location of Sequencing Primers (for all MSCV Vectors)

- pMSCVneo Vector
 - 5' primer: 1333–1355
 - 3' primer: 1660–1682
- pMSCVhyg Vector
 - 5' primer: 1333–1355
 - 3' primer: 1660–1682
- pMSCVpuro Vector
 - 5' primer: 1333–1355
 - 3' primer: 1660–1682

Notice to Purchaser

Clontech® products are to be used for research purposes only. They may not be used for any other purpose, including, but not limited to, use in drugs, *in vitro* diagnostic purposes, therapeutics, or in humans. Clontech products may not be transferred to third parties, resold, modified for resale, or used to manufacture commercial products or to provide a service to third parties without prior written approval of Clontech Laboratories, Inc.

Your use of this product is also subject to compliance with the licensing requirements described on the product's web page at <http://www.clontech.com>. It is your responsibility to review, understand and adhere to any restrictions imposed by these statements.

Clontech and the Clontech logo are trademarks of Clontech Laboratories, Inc. All other marks are the property of their respective owners. Certain trademarks may not be registered in all jurisdictions. Clontech is a Takara Bio Company. ©2013 Clontech Laboratories, Inc.

This document has been reviewed and approved by the Clontech Quality Assurance Department.