

In the interest of conserving resources, we are no longer shipping manuals with products. Please visit [www.clontech.com/manuals](http://www.clontech.com/manuals) to obtain an electronic version.

## PRODUCT: Mouse Kidney Matchmaker® cDNA Library

**CATALOG No.** 638847

**LOT NUMBER:** 1210004

### STORAGE CONDITIONS

- Store library at  $-70^{\circ}\text{C}$ .
- Avoid repeated freeze/thaw cycles.

### SHELF LIFE

1 year from date of receipt under proper storage conditions

### SHIPPING CONDITIONS

Dry ice ( $-70^{\circ}\text{C}$ )

### mRNA SOURCE

Normal, whole kidneys pooled from 200 BALB/c males, ages 8–12 weeks

**NOTE:** No further information on the mRNA source was made available to Clontech.

### PACKAGE CONTENTS

- 2 x 1.0 ml library culture (in *E. coli* BNN132)
- *Saccharomyces cerevisiae* strain AH109
- *Saccharomyces cerevisiae* strain CG-1945
- Matchmaker™ Two-Hybrid System 3 User Manual (PT3247-1)
- Clontech Yeast Protocols Handbook (PT3024-1)
- pACT2 Vector Information Packet (PT3022-5)

**\* TITER:**  $\geq 10^8$  cfu (of BNN132)/ml in LB broth & 25% sterile glycerol

**CLONING VECTOR:** pACT2

**CLONING SITE:** *Xho* I/*Eco* R I

**ADAPTOR SEQUENCE:** 5' AATTCGCGGCCGCGTCGAC3'  
3' GCGCCGGCGCAGCTG5'

**PRIMING METHOD:** *Xho* I-(dT)<sub>15</sub> primed

## FOR RESEARCH USE ONLY

### QUALITY CONTROL DATA

#### 1. Library Information

- |  |                   |
|--|-------------------|
| A. Estimated % of Colonies with Inserts: | 87%               |
| B. Number of Independent Clones:         | $3.5 \times 10^6$ |
| C. Average cDNA Size:                    | 2.0 kb            |
| D. cDNA Size Range:                      | 0.4 – 4.0 kb      |
- (The average cDNA size and size range were determined by examination of an autoradiogram of the cDNA prior to cloning.)
- E. Amplification: This library was amplified once in BNN132.

- This pACT2 library was released from a  $\lambda$ ACT2 library.
- \* Please retiter the library before use. For library amplification, plate out the library to obtain isolated colonies on each plate (approximately  $10^4$ – $10^5$  colonies per plate). Plating at a higher density may cause loss of library representation.



**Clontech**

United States/Canada  
800.662.2566

Asia Pacific  
+1.650.919.7300

Europe  
+33.(0)1.3904.6880

Japan  
+81.(0)77.543.6116

Clontech Laboratories, Inc.  
A Takara Bio Company  
1290 Terra Bella Ave.  
Mountain View, CA 94043  
Technical Support (US)  
E-mail: [tech@clontech.com](mailto:tech@clontech.com)  
[www.clontech.com](http://www.clontech.com)

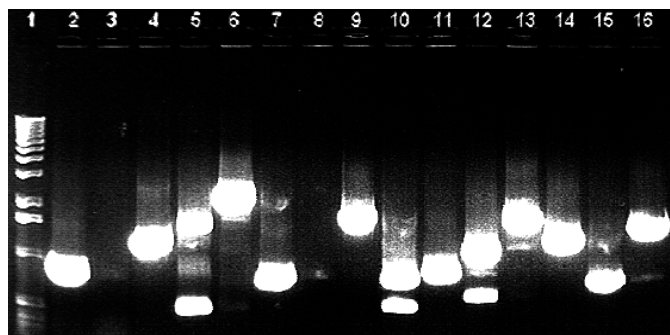
(PA053832)

**QUALITY CONTROL DATA** continued**2. Insert Size Range Analysis**

15 colonies were randomly picked and subjected to long-distance PCR using Clontech's Matchmaker™ AD LD-Insert Screening Amplimers (Cat. No. 630433) and Advantage® cDNA PCR Kit (Cat. No. 639101) in a Perkin-Elmer DNA Thermal Cycler.

13 of the 15 colonies contained inserts as determined by PCR.

Lane: 1. 1-kb DNA ladder  
2. 0.9 kb  
3. no insert  
4. 1.4 kb  
5. 1.7 kb  
6. 2.6 kb  
7. 0.9 kb  
8. no insert  
9. 1.9 kb  
10. 0.8 kb  
11. 0.9 kb  
12. 1.2 kb  
13. 1.9 kb  
14. 1.4 kb  
15. 0.8 kb  
16. 1.7 kb

**3. Coprecipitant Usage**

This library was constructed using yeast tRNA as a coprecipitant.

yes  no

The library was subjected to PCR screening using yeast-specific 5S rRNA primers. No amplified product was observed.

**4. Analysis of Sequence Representation**

Sequence representation is evaluated by colony or plaque hybridization using a gene-specific probe. Mammalian libraries are screened with a human  $\beta$ -actin probe which cross-reacts with all mammalian  $\beta$ -actin cDNA. All human cDNA libraries must show a minimum  $\beta$ -actin frequency of 0.10%, and all other mammalian cDNA Libraries must show minimum  $\beta$ -actin frequency of 0.05%. Nonmammalian cDNA libraries are screened with a ubiquitously expressed species-specific probe.

**Note:** The frequency of  $\beta$ -actin positive clones varies among libraries made with RNA from different tissues and species. A frequency of >0.10% in a human cDNA library suggests a reasonably high probability of finding a rare transcript [Hagen, F. S., et al. (1988) *BioTechniques* 6:340-345.] For nonhuman mammalian cDNA libraries, a frequency of 0.05% suggests a reasonably high probability of finding a rare message in those libraries (Clontech observation, unpublished).

The percentage of colonies or plaques to which  $\beta$ -actin hybridized: 0.10%

**Note:** The  $\beta$ -actin probe may hybridize to other forms of actin.

**QUALITY CONTROL DATA** continued**5. PCR Screening for Specific Sequences**

1  $\mu$ l of the library lysate was screened by PCR using PCR primers for one or more of the following gene transcripts:  $\beta$ -actin, G3PDH, or transferrin receptor.  $\beta$ -actin and G3PDH represent high-abundance gene transcripts whereas transferrin receptor represents a low-abundance gene transcript. Furthermore, the  $\beta$ -actin primers are designed to amplify a 1.1-kb fragment near the 5' end and thus provide a stringent test for detecting the presence of full-length transcripts. (Note: Species-specific primer sets are used for human, mouse, and rat cDNA libraries; human primer sets are used for other mammalian cDNA libraries.)

The presence of the following 2 sequences were determined using PCR.

$\beta$ -actin

G3PDH

---

## Mouse Kidney Matchmaker® cDNA Library pACT2

### CATALOG NO.

638847

### NOTICE TO PURCHASER:

Clontech products are to be used for research purposes only. They may not be used for any other purpose, including, but not limited to, use in drugs, in vitro diagnostic purposes, therapeutics, or in humans. Clontech products may not be transferred to third parties, resold, modified for resale, or used to manufacture commercial products or to provide a service to third parties without prior written approval of Clontech Laboratories, Inc.

Your use of this product is also subject to compliance with the licensing requirements listed below and described on the product's web page at <http://www.clontech.com>. It is your responsibility to review, understand and adhere to any restrictions imposed by these statements.

### TRADEMARKS:

Clontech, the Clontech logo and Matchmaker are trademarks of Clontech Laboratories, Inc.

All other marks are the property of their respective owners. Certain trademarks may not be registered in all jurisdictions. Clontech is a Takara Bio Company. ©2012 Clontech Laboratories, Inc. This document has been reviewed and approved by the Clontech Quality Assurance Department.

---

#### Clontech Laboratories, Inc.

A Takara Bio Company

1290 Terra Bella Avenue, Mountain View, CA 94043, USA

U.S. Technical Support: [tech@clontech.com](mailto:tech@clontech.com)

10/17/2012

**United States/Canada**

**Asia Pacific**

**Europe**

**Japan**

800.662.2566

+1.650.919.7300

+33.(0)1.3904.6880

+81.(0)77.543.6116