

## qPCR Human Reference Total RNA

**Catalog No.**

636690

**Amount**

25 µg

**Lot Number**

2406686A

### Description

A mixture of total RNAs from a collection of adult human tissues, chosen to represent a broad range of expressed genes. Both male and female donors are represented.

qPCR Reference Total RNA serves as a standard for the accurate and reproducible comparison of gene expression data using real-time quantitative PCR (qPCR). It may also be used as a source of positive control templates for validating qPCR primer designs.

Total RNA was isolated by a modified guanidinium thiocyanate method (Chomczynski and Sacchi 1987).

### Package Contents

- 25 µl qPCR Human Reference Total RNA (1 µg/µl)

### Storage Conditions

- Store at –70°C.

### Expiration Date

- JUL. 11, 2027

### Shipping Conditions

- Dry ice

### Product Documents

Documents for our products are available for download at [takarabio.com/manuals](https://takarabio.com/manuals)

The following documents apply to this product:

- qPCR Human Reference Total RNA Protocol-At-A-Glance

### References

Chomczynski, P. & Sacchi, N. Single-Step Method of RNA Isolation by Acid Guanidinium Thiocyanate–Phenol–Chloroform Extraction. *Anal. Biochem.* **162**, 156–159 (1987).

### Quality Control Data

#### Raw Material Quality Control

Each total RNA used to manufacture the qPCR Human Reference Total RNA was tested for integrity using the Agilent 2100 Bioanalyzer by checking the ratio of the 28S and 18S ribosomal bands.

---

**Takara Bio USA, Inc.**

2560 Orchard Parkway, San Jose, CA 95131, USA

U.S. Technical Support: [technical\\_support@takarabio.com](mailto:technical_support@takarabio.com)United States/Canada  
800.662.2566  
(050825)Asia Pacific  
+1.650.919.7300Europe  
+33.(0)1.3904.6880Japan  
+81.(0)77.565.6999

# Certificate of Analysis

Cat. No. 636690

qPCR Human Reference Total RNA

## Genomic DNA Contamination

qPCR Reference RNA was assessed for genomic DNA contamination using a real-time qPCR test for the *KRAS* gene. The qPCR Human Reference Total RNA contained <0.01% (w/w) genomic DNA.

**RESULT:** Pass

## Functional Quality Control

qPCR Reference Total RNA was reversed-transcribed and tested for performance in real-time quantitative PCR for the human *RPLP0* gene using TB Green® Advantage® qPCR Premix. A fivefold sequential dilution series comprised of six samples ranging from 50 ng to 16 pg was used as template. Expected results were observed.

**RESULT:** Pass

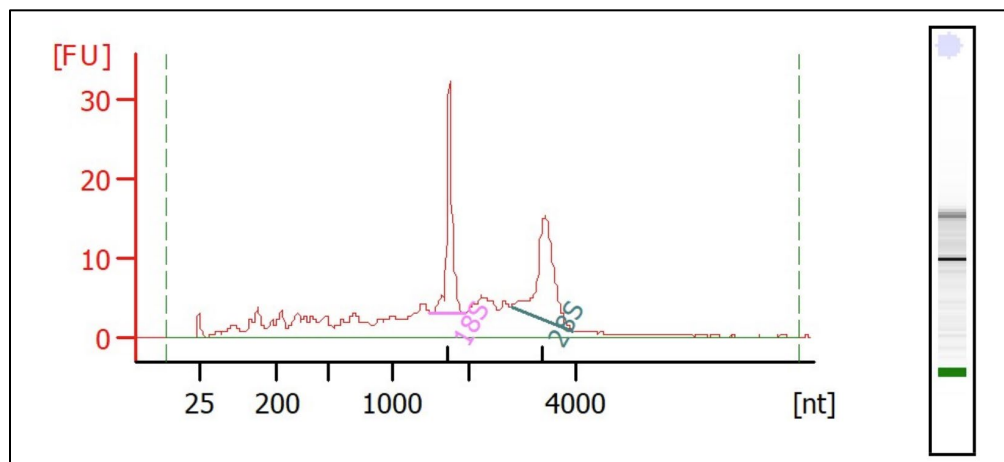
## Additional Information:

Concentration and Purity were measured by Nanodrop spectrophotometer.

Concentration (1 µg/µl ± 10%): 0.976 µg/µl

Purity (A260nm/A280nm ≥ 1.8): 2.06

Integrity (28S/18S ≥ 1.0): 1.2



It is certified that this product meets the above specifications, as reviewed and approved by the Quality Department.

## qPCR Human Reference Total RNA

### CATALOG NO.

636690

### NOTICE TO PURCHASER:

Our products are to be used for **Research Use Only**. They may not be used for any other purpose, including, but not limited to, use in humans, therapeutic or diagnostic use, or commercial use of any kind. Our products may not be transferred to third parties, resold, modified for resale, or used to manufacture commercial products or to provide a service to third parties without our prior written approval.

Your use of this product is also subject to compliance with the licensing requirements, listed below if applicable, and described on the product's web page at <http://www.takarabio.com>. It is your responsibility to review, understand and adhere to any restrictions imposed by these statements.

### TRADEMARKS:

©2025 Takara Bio Inc. All Rights Reserved.

All trademarks are the property of Takara Bio Inc. or its affiliate(s) in the U.S. and/or other countries or their respective owners. Certain trademarks may not be registered in all jurisdictions.

---

#### Takara Bio USA, Inc.

2560 Orchard Parkway, San Jose, CA 95131, USA

U.S. Technical Support: [technical\\_support@takarabio.com](mailto:technical_support@takarabio.com)

#### United States/Canada

800.662.2566

#### Asia Pacific

+1.650.919.7300

#### Europe

+33.(0)1.3904.6880

#### Japan

+81.(0)77.565.6999

5/8/2025