

In the interest of conserving resources, we are no longer shipping manuals with products. Please visit [www.clontech.com/manuals](http://www.clontech.com/manuals) to obtain an electronic version.

## PRODUCT: Rat Prostate Total RNA

**CATALOG No.** 636650      **CONCENTRATION** 1 µg/µl      **DESCRIPTION** Total RNA isolated by a modified guanidinium thiocyanate method (1)

**LOT NUMBER:** 8082002A

**FORM**  
Suspension of total RNA in RNase-Free water.

### PACKAGE CONTENTS

50 µg Total RNA from the tissues/cells specified below

### STORAGE CONDITIONS

Store at -70°C

### TOTAL RNA SOURCE

Normal prostates pooled from 200 male Sprague-Dawley rats, ages: 8-12 weeks

No further RNA source information is available.

### SHELF LIFE

1 year from date of receipt under proper storage conditions.

### IMPORTANT NOTE

To prevent contamination by RNases, always wear gloves when handling RNA. Avoid multiple freeze/thaw cycles.

### SHIPPING CONDITIONS

Dry ice (-70°C)

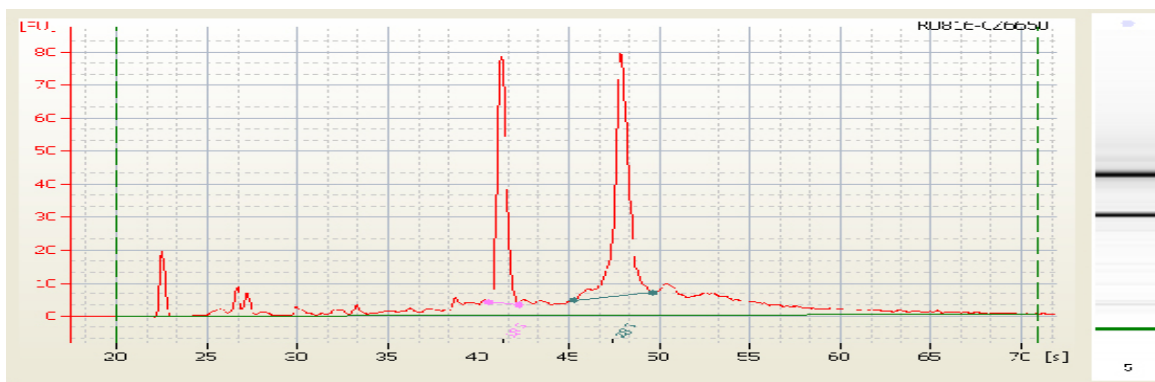
### FOR RESEARCH USE ONLY

### QUALITY CONTROL DATA

This lot of total RNA was analyzed by capillary electrophoresis (CE) using an Agilent 2100 Bioanalyzer. The actual electropherogram trace for this RNA is provided below. RNA concentration and purity were evaluated by UV spectrophotometry.

Both the area ratio of the 28S/18S rRNA peaks, and the proportion (relative percentage) of these two peak areas to the total area under the electropherogram provide reliable quantitative estimates of RNA integrity. For both of these criteria, this sample meets or exceeds Clontech Standards for high quality total RNA.

Peak Areas: 28S: 27.4%    18S: 19.9%    Ratio 28S/18S: 1.4    Ratio  $A_{260}/A_{280}$ : 2.0



### REFERENCES

- Chomczynski, P. & Sacchi, N. (1987) Single-step method of RNA isolation by acid guanidinium thiocyanate-phenol-chloroform extraction. *Anal. Biochem.* **162**:156-159.

APPROVED BY: \_\_\_\_\_

### Notice to Purchaser

Clontech products are to be used for research purposes only. They may not be used for any other purpose, including, but not limited to, use in drugs, in vitro diagnostic purposes, therapeutics, or in humans. Clontech products may not be transferred to third parties, resold, modified for resale, or used to manufacture commercial products or to provide a service to third parties without written approval of Clontech Laboratories, Inc.

Clontech, the Clontech logo and all other trademarks are the property of Clontech Laboratories, Inc., unless noted otherwise. Clontech is a Takara Bio Company. ©2006 Clontech Laboratories, Inc.

(PA23067)



**Clontech**

United States/Canada  
800.662.2566

Asia Pacific  
+1.650.919.7300

Europe  
+33.(0)1.3904.6880

Japan  
+81.(0)77.543.6116

Clontech Laboratories, Inc.  
A Takara Bio Company  
1290 Terra Bella Ave.  
Mountain View, CA 94043  
Technical Support (US)  
E-mail: [tech@clontech.com](mailto:tech@clontech.com)  
[www.clontech.com](http://www.clontech.com)