

In the interest of conserving resources, we are no longer shipping manuals with products. Please visit [www.clontech.com/manuals](http://www.clontech.com/manuals) to obtain an electronic version.

## PRODUCT: Rat Lung Total RNA

**CATALOG No.**  
636647

**CONCENTRATION**  
1 µg/µl

### DESCRIPTION

Total RNA isolated by a modified guanidinium thiocyanate method (1).

**LOT NUMBER** 1604422A

### PACKAGE CONTENTS

50 µg Total RNA from the tissues/cells specified below

### FORM

Total RNA provided in RNase-Free water.

### TOTAL RNA SOURCE

Normal lungs were pooled from 200 male Sprague-Dawley rats, ages: 8-12 weeks

### STORAGE CONDITIONS

Store at -70°C

### SHELF LIFE

1 year from date of receipt under proper storage conditions.

No further RNA source information is available.

### SHIPPING CONDITIONS

Dry ice (-70°C)

### IMPORTANT NOTE

To prevent contamination by RNases, always wear gloves when handling RNA. Avoid multiple freeze/thaw cycles.

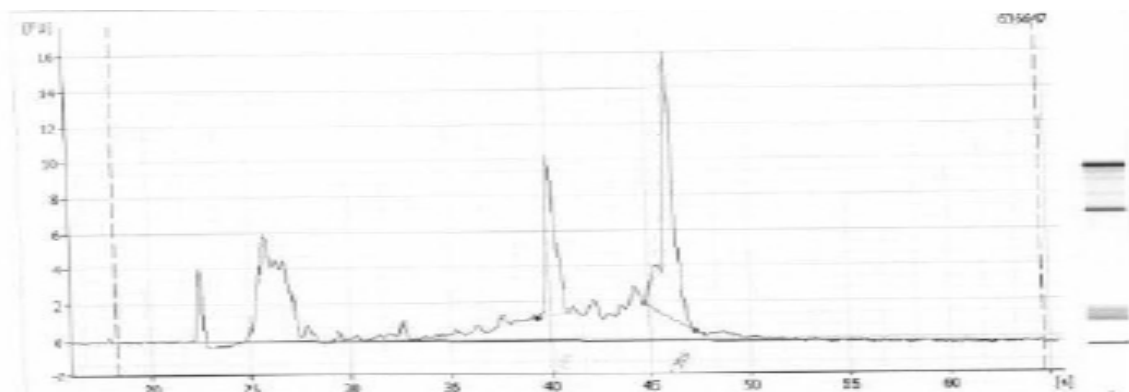
### FOR RESEARCH USE ONLY

### QUALITY CONTROL DATA

This lot of total RNA was analyzed by capillary electrophoresis (CE) using an Agilent 2100 Bioanalyzer. The actual electropherogram trace for this RNA is provided below. RNA concentration and purity were evaluated by UV spectrophotometry.

Both the area ratio of the 28S/18S rRNA peaks, and the proportion (relative percentage) of these two peak areas to the total area under the electropherogram provide reliable quantitative estimates of RNA integrity. For both of these criteria, this sample meets or exceeds Clontech standards for high quality total RNA.

Peak Areas: 28S: 19.2%    18S: 10.2%    Ratio 28S/18S: 1.9    Ratio  $A_{260}/A_{280}$ : 2.1



### REFERENCES

- Chomczynski, P. & Sacchi, N. (1987) Single-step method of RNA isolation by acid guanidinium thiocyanate-phenol-chloroform extraction. *Anal. Biochem.* **162**:156-159.



**Clontech**

**United States/Canada**  
800.662.2566

**Asia Pacific**  
+1.650.919.7300

**Europe**  
+33.(0)1.3904.6880

**Japan**  
+81.(0)77.543.6116

Clontech Laboratories, Inc.  
A Takara Bio Company  
1290 Terra Bella Ave.  
Mountain View, CA 94043  
Technical Support (US)  
E-mail: [tech@clontech.com](mailto:tech@clontech.com)  
[www.clontech.com](http://www.clontech.com)

(PA23064)

---

## Rat Lung Total RNA

### CATALOG NO.

636647

### NOTICE TO PURCHASER:

Our products are to be used for research purposes only. They may not be used for any other purpose, including, but not limited to, use in drugs, in vitro diagnostic purposes, therapeutics, or in humans. Our products may not be transferred to third parties, resold, modified for resale, or used to manufacture commercial products or to provide a service to third parties without prior written approval of Clontech Laboratories, Inc.

Your use of this product is also subject to compliance with the licensing requirements listed below and described on the product's web page at <http://www.clontech.com>. It is your responsibility to review, understand and adhere to any restrictions imposed by these statements.

### TRADEMARKS:

Clontech and the Clontech logo are trademarks of Clontech Laboratories, Inc.

All other marks are the property of their respective owners. Certain trademarks may not be registered in all jurisdictions. Clontech is a Takara Bio Company. ©2016 Clontech Laboratories, Inc. This document has been reviewed and approved by the Clontech Quality Assurance Department.

---

#### Clontech Laboratories, Inc.

A Takara Bio Company  
1290 Terra Bella Avenue, Mountain View, CA 94043, USA  
U.S. Technical Support: [tech@clontech.com](mailto:tech@clontech.com)

6/13/2016

United States/Canada	Asia Pacific	Europe	Japan
800.662.2566	+1.650.919.7300	+33.(0)1.3904.6880	+81.(0)77.543.6116