

In the interest of conserving resources, we are no longer shipping manuals with products. Please visit www.clontech.com/manuals to obtain an electronic version.

PRODUCT: Rat Kidney Total RNA

CATALOG No. 636624	AMOUNT 250 µg	DESCRIPTION Total RNA isolated by a modified guanidinium thiocyanate method (1).
LOT NUMBER 1304015A		TOTAL RNA SOURCE Normal kidneys pooled from 200 male Sprague-Dawley rats, ages: 8-12 weeks
FORM Suspension of total RNA [1 µg/µl] in RNase-free water.		No further RNA source information is available.
STORAGE CONDITIONS Store at -70°C		IMPORTANT NOTE To prevent contamination by RNases, always wear gloves when handling RNA. Avoid multiple freeze/thaw cycles.
SHELF LIFE 1 year from date of receipt under proper storage conditions.		
SHIPPING CONDITIONS Dry ice (-70°C)		
PRIOR TO USE <ul style="list-style-type: none">• Centrifuge the tube at 15,000 rpm for 15 min. in a microcentrifuge.• Remove the supernatant and resuspend the pellet in 70% ethanol.• Centrifuge the tube at 15,000 rpm for 15 min. in a microcentrifuge.• Remove the supernatant and resuspend pellet in nuclease-free (non-DEPC treated) H₂O to the desired concentration.		

FOR RESEARCH USE ONLY**QUALITY CONTROL DATA**

See page 2.

REFERENCES

1. Chomczynski, P. & Sacchi, N. (1987) Single-step method of RNA isolation by acid guanidinium thiocyanate-phenol-chloroform extraction. *Anal. Biochem.* **162**:156-159.

**Clontech**

United States/Canada
800.662.2566

Asia Pacific
+1.650.919.7300

Europe
+33.(0)1.3904.6880

Japan
+81.(0)77.543.6116

Clontech Laboratories, Inc.
A Takara Bio Company
1290 Terra Bella Ave.
Mountain View, CA 94043
Technical Support (US)
E-mail: tech@clontech.com
www.clontech.com

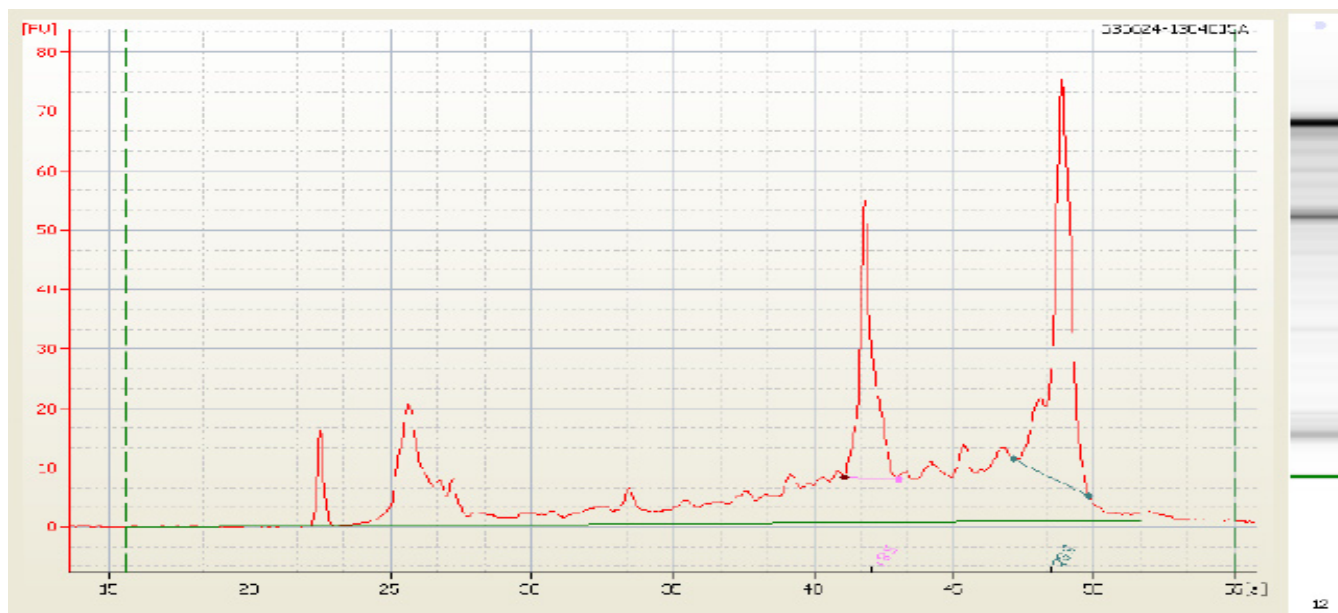
(PA882867)

QUALITY CONTROL DATA

This lot of total RNA was analyzed by capillary electrophoresis (CE) using an Agilent 2100 Bioanalyzer. The actual electropherogram trace for this RNA is provided below. RNA concentration and purity were evaluated by UV spectrophotometry.

Both the area ratio of the 28S/18S rRNA peaks, and the proportion (relative percentage) of these two peak areas to the total area under the electropherogram provide reliable quantitative estimates of RNA integrity. For both of these criteria, this sample meets or exceeds Clontech standards for high quality total RNA.

Peak Areas: 28S: 18.5% 18S: 11% Ratio 28S/18S: 1.7 Ratio A_{260}/A_{280} : 2.0



Rat Kidney Total RNA

CATALOG NO.

636624

NOTICE TO PURCHASER:

Clontech products are to be used for research purposes only. They may not be used for any other purpose, including, but not limited to, use in drugs, in vitro diagnostic purposes, therapeutics, or in humans. Clontech products may not be transferred to third parties, resold, modified for resale, or used to manufacture commercial products or to provide a service to third parties without prior written approval of Clontech Laboratories, Inc.

Your use of this product is also subject to compliance with the licensing requirements listed below and described on the product's web page at <http://www.clontech.com>. It is your responsibility to review, understand and adhere to any restrictions imposed by these statements.

TRADEMARKS:

Clontech and the Clontech logo are trademarks of Clontech Laboratories, Inc.

All other marks are the property of their respective owners. Certain trademarks may not be registered in all jurisdictions. Clontech is a Takara Bio Company. ©2013 Clontech Laboratories, Inc. This document has been reviewed and approved by the Clontech Quality Assurance Department.

Clontech Laboratories, Inc.

A Takara Bio Company

1290 Terra Bella Avenue, Mountain View, CA 94043, USA

U.S. Technical Support: tech@clontech.com

5/20/2013

United States/Canada

Asia Pacific

Europe

Japan

800.662.2566

+1.650.919.7300

+33.(0)1.3904.6880

+81.(0)77.543.6116