

PRODUCT: Rat Heart Total RNA

In the interest of conserving resources, we are no longer shipping manuals with products. Please visit www.clontech.com/manuals to obtain an electronic version.

CATALOG NUMBER: C1000-01**LOT No.** 4120130**QUANTITY:** 250 µg**FORM**Suspension of total RNA in 70% ethanol,
0.08 M sodium acetate**STORAGE CONDITIONS:** -70°C**SHELF LIFE**1 year from date of receipt under proper
storage conditions.**SHIPPING CONDITIONS**

Dry ice (-70°C)

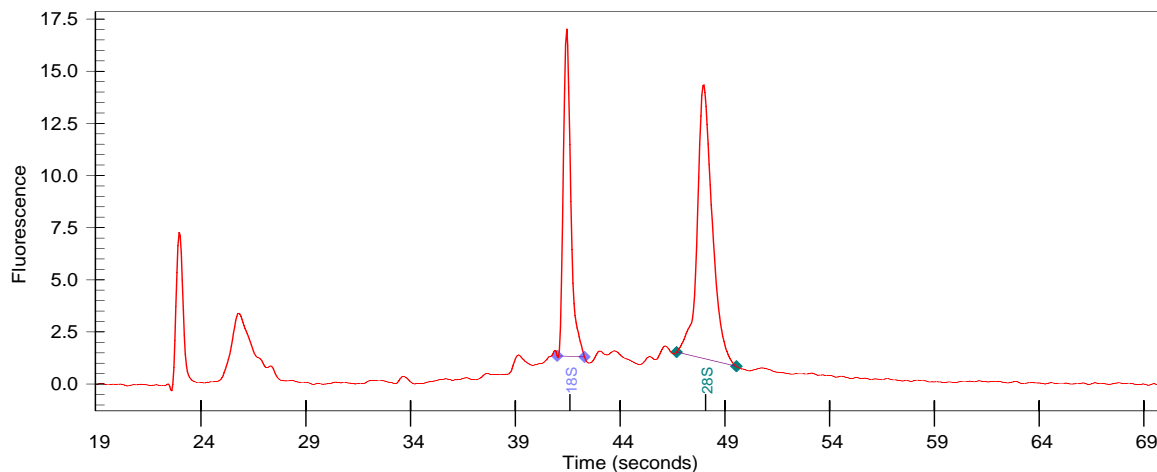
Total RNA isolated by a modified guanidinium
thiocyanate method (1).**TOTAL RNA SOURCE**normal heart pooled from 200 male
Sprague-Dawley, ages 8 - 12 weeks.

No further RNA source information is available.

IMPORTANT NOTETo prevent contamination by RNases, always wear
gloves when handling RNA and exercise care to
avoid potential sources of RNase contamination.
Avoid multiple freeze/thaw cycles.**FOR RESEARCH USE ONLY****QUALITY CONTROL DATA**

This lot of total RNA was analyzed by capillary electrophoresis (CE) using an Agilent 2100 Bioanalyzer. The actual electropherogram trace for this RNA is provided below. RNA concentration and purity were evaluated by UV spectrophotometry.

Both the area ratio of the 28S/18S rRNA peaks, and the proportion (relative percentage) of these two peak areas to the total area under the electropherogram provide reliable quantitative estimates of RNA integrity. For both of these criteria, this sample meets or exceeds Clontech standards for high-quality total RNA.

Peak Areas: 28S: 22.4% 18S: 15.7% Ratio 28S/18S: 1.4 Ratio A_{260}/A_{280} : 1.9**Clontech****REFERENCE**1. Chomczynski, P. & Sacchi, N. (1987) Single-step method of RNA isolation by acid guanidinium thiocyanate-phenol-chloroform extraction. *Anal. Biochem.* **162**:156-159.APPROVED BY: **Notice to Purchaser**

This product is intended to be used for research purposes only. It is not to be used for drug or diagnostic purposes nor is it intended for human use. Clontech products may not be resold, modified for resale, or used to manufacture commercial products without written approval of Clontech Laboratories, Inc.

United States/Canada
800.662.2566Asia Pacific
+1.650.919.7300Europe
+33.(0)1.3904.6880Japan
+81.(0)77.543.6116Clontech Laboratories, Inc.
A Takara Bio Company
1290 Terra Bella Ave.
Mountain View, CA 94043
Technical Support (US)
E-mail: tech@clontech.com
www.clontech.comClontech, Clontech logo and all other trademarks are the property of Clontech Laboratories, Inc.
Clontech is a Takara Bio Company. ©2005

(PA1X481)