

In the interest of conserving resources, we are no longer shipping manuals with products. Please visit www.clontech.com/manuals to obtain an electronic version.

PRODUCT: Human Smooth Muscle Total RNA

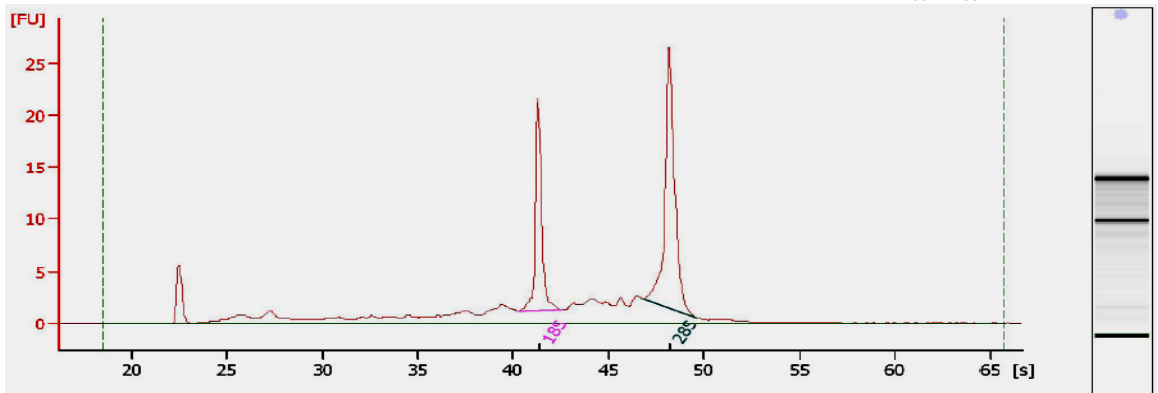
CATALOG No. 636547	CONCENTRATION 1 µg/µl	DESCRIPTION Total RNA isolated by a modified guanidinium thiocyanate method (1).
LOT NUMBER 1005017		PACKAGE CONTENTS 50 µg Total RNA from the tissues/cells specified below
FORM Suspension of total RNA in RNase-Free water.		TOTAL RNA SOURCE Normal human smooth muscles pooled from 4 Asian males, ages: 21-36 No further RNA source information is available.
STORAGE CONDITIONS Store at -70°C		
SHELF LIFE 1 year from date of receipt under proper storage conditions.		IMPORTANT NOTE To prevent contamination by RNases, always wear gloves when handling RNA. Avoid multiple freeze/thaw cycles.
SHIPPING CONDITIONS Dry ice (-70°C)		

FOR RESEARCH USE ONLY

QUALITY CONTROL DATA

This lot of total RNA was analyzed by capillary electrophoresis (CE) using an Agilent 2100 Bioanalyzer. The actual electropherogram trace for this RNA is provided below. RNA concentration and purity were evaluated by UV spectrophotometry. Both the area ratio of the 28S/18S rRNA peaks, and the proportion (relative percentage) of these two peak areas to the total area under the electropherogram provide reliable quantitative estimates of RNA integrity. For both of these criteria, this sample meets or exceeds Clontech standards for high quality total RNA.

Peak Areas: 28S: 26.3% 18S: 15.6% Ratio 28S/18S: 1.7 Ratio A_{260}/A_{280} : 1.9



REFERENCES

- Chomczynski, P. & Sacchi, N. (1987) Single-step method of RNA isolation by acid guanidinium thiocyanate-phenol-chloroform extraction. *Anal. Biochem.* **162**:156-159.

APPROVED BY: _____

Notice to Purchaser

Clontech products are to be used for research purposes only. They may not be used for any other purpose, including, but not limited to, use in drugs, in vitro diagnostic purposes, therapeutics, or in humans. Clontech products may not be transferred to third parties, resold, modified for resale, or used to manufacture commercial products or to provide a service to third parties without written approval of Clontech Laboratories, Inc.

Clontech, the Clontech logo and all other trademarks are the property of Clontech Laboratories, Inc., unless noted otherwise. Clontech is a Takara Bio Company. ©2006

(PA24144)



Clontech

United States/Canada
800.662.2566

Asia Pacific
+1.650.919.7300

Europe
+33.(0)1.3904.6880

Japan
+81.(0)77.543.6116

Clontech Laboratories, Inc.
A Takara Bio Company
1290 Terra Bella Ave.
Mountain View, CA 94043
Technical Support (US)
E-mail: tech@clontech.com
www.clontech.com