

PRODUCT: Human HeLa Cell Total RNA

In the interest of conserving resources, we are no longer shipping manuals with products. Please visit www.clontech.com/manuals to obtain an electronic version.

CATALOG #

LOT No. 6010432

CONCENTRATION: 1 µg/µl

FORM

Suspension of total RNA in DEPC-treated H₂O

STORAGE CONDITIONS: -70°C

SHELF LIFE

1 year from date of receipt under proper storage conditions.

SHIPPING CONDITIONS

Dry ice (-70°C)

Total RNA isolated by a modified guanidinium thiocyanate method (1).

PACKAGE CONTENTS

50 µg Total RNA from the tissues/cells specified below

TOTAL RNA SOURCE

HeLa cell line.
ATCC#: CCL-2

No further RNA source information is available.

IMPORTANT NOTE

To prevent contamination by RNases, always wear gloves when handling RNA and exercise care to avoid potential sources of RNase contamination. Avoid multiple freeze/thaw cycles.

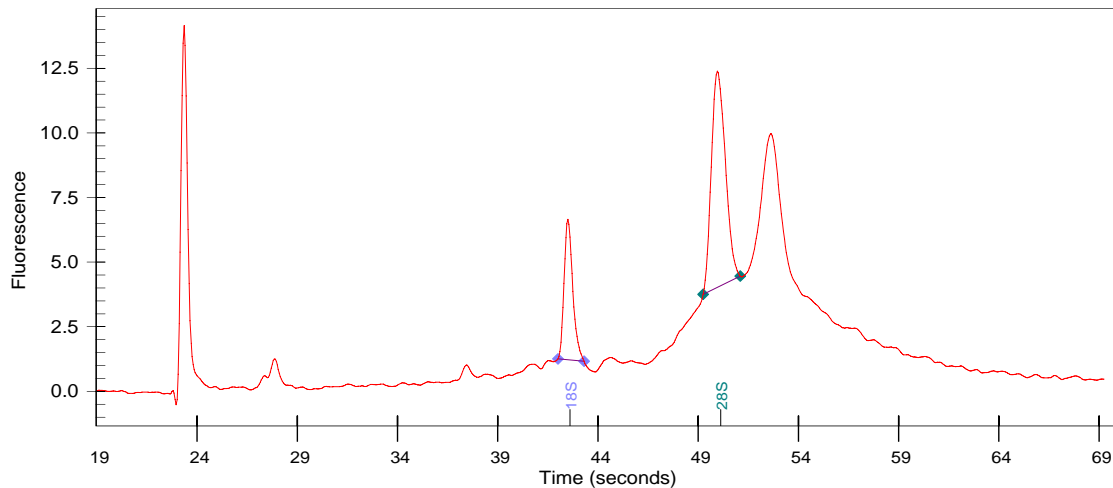
FOR RESEARCH USE ONLY

QUALITY CONTROL DATA

This lot of total RNA was analyzed by capillary electrophoresis (CE) using an Agilent 2100 Bioanalyzer. The actual electropherogram trace for this RNA is provided below. RNA concentration and purity were evaluated by UV spectrophotometry.

Both the area ratio of the 28S/18S rRNA peaks, and the proportion (relative percentage) of these two peak areas to the total area under the electropherogram provide reliable quantitative estimates of RNA integrity. For both of these criteria, this sample meets or exceeds Clontech standards for high-quality total RNA.

Peak Areas: 28S: 10.6% 18S: 5.0% Ratio 28S/18S: 2.1 Ratio A₂₆₀/A₂₈₀: 2.0



REFERENCE

1. Chomczynski, P. & Sacchi, N. (1987) Single-step method of RNA isolation by acid guanidinium thiocyanate-phenol-chloroform extraction. *Anal. Biochem.* **162**:156-159.

APPROVED BY:

Notice to Purchaser

This product is intended to be used for research purposes only. It is not to be used for drug or diagnostic purposes nor is it intended for human use. Clontech products may not be resold, modified for resale, or used to manufacture commercial products without written approval of Clontech Laboratories, Inc.

Clontech, Clontech logo and all other trademarks are the property of Clontech Laboratories, Inc. Clontech is a Takara Bio Company. ©2005 (PA23945)



Clontech

United States/Canada
800.662.2566

Asia Pacific
+1.650.919.7300

Europe
+33.(0)1.3904.6880

Japan
+81.(0)77.543.6116

Clontech Laboratories, Inc.
A Takara Bio Company
1290 Terra Bella Ave.
Mountain View, CA 94043
Technical Support (US)
E-mail: tech@clontech.com
www.clontech.com