

## Human HeLa Cell Total RNA

Catalog No.	Amount	Lot Number
636543	50 µg	1810043A

### Description

Total RNA isolated by a modified guanidinium thiocyanate method (Chomczynski and Sacchi 1987).

### Package Contents

- 50 µg Total RNA from the tissues/cells specified below

### Storage Conditions

- Store at  $-70^{\circ}\text{C}$ .

### Form

- Total RNA provided in RNase-free water.

### Concentration

- 1 µg/µl

### Total RNA Source

- HeLa cell line., ATCC#: CCL-2
- No further RNA source information is available.

### Shelf Life

- 1 year from date of receipt under proper storage conditions.

### Shipping Conditions

- Dry ice ( $-70^{\circ}\text{C}$ )

### Important Note

- To prevent contamination by RNases, always wear gloves when handling RNA. Avoid multiple freeze/thaw cycles.

### References

Chomczynski, P. & Sacchi, N. Single-step method of RNA isolation by acid guanidinium thiocyanate-phenol-chloroform extraction. *Anal. Biochem.* **162**, 156–9 (1987).

---

#### Takara Bio USA, Inc.

1290 Terra Bella Avenue, Mountain View, CA 94043, USA  
U.S. Technical Support: [techUS@takarabio.com](mailto:techUS@takarabio.com)

United States/Canada 800.662.2566 (090517)	Asia Pacific +1.650.919.7300	Europe +33.(0)1.3904.6880	Japan +81.(0)77.565.6999
--	---------------------------------	------------------------------	-----------------------------

# Certificate of Analysis

Cat. No. 636543

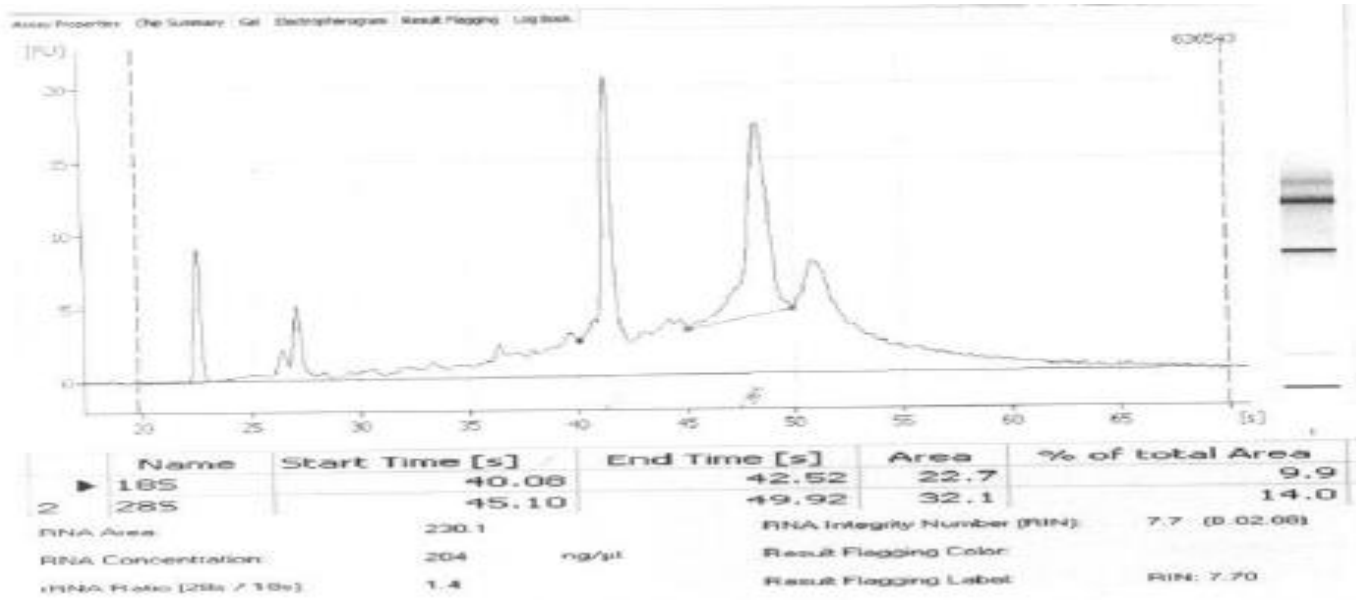
Human HeLa Cell Total RNA

## Quality Control Data

This lot of total RNA was analyzed by capillary electrophoresis (CE) using an Agilent 2100 Bioanalyzer. The actual electropherogram trace for this RNA is provided below. RNA concentration and purity were evaluated by UV spectrophotometry.

Both the area ratio of the 28S/18S rRNA peaks, and the proportion (relative percentage) of these two peak areas to the total area under the electropherogram provide reliable quantitative estimates of RNA integrity. For both of these criteria, this sample meets or exceeds our standards for high-quality total RNA.

Peak Areas: 28S: 14.0%                      18S: 9.9%                      Ratio 28S/18S: 1.4                      Ratio A<sub>260</sub>/A<sub>280</sub>: 2.1



It is certified that this product meets the above specifications, as reviewed and approved by the Quality Department.

---

## Human HeLa Cell Total RNA

### CATALOG NO.

636543

### NOTICE TO PURCHASER:

Our products are to be used for **Research Use Only**. They may not be used for any other purpose, including, but not limited to, use in humans, therapeutic or diagnostic use, or commercial use of any kind. Our products may not be transferred to third parties, resold, modified for resale, or used to manufacture commercial products or to provide a service to third parties without our prior written approval.

Your use of this product is also subject to compliance with the licensing requirements, listed below if applicable, and described on the product's web page at <http://www.takarabio.com>. It is your responsibility to review, understand and adhere to any restrictions imposed by these statements.

### TRADEMARKS:

©2018 Takara Bio Inc. All Rights Reserved.

All trademarks are the property of Takara Bio Inc. or its affiliate(s) in the U.S. and/or other countries or their respective owners. Certain trademarks may not be registered in all jurisdictions.

---

#### Takara Bio USA, Inc.

1290 Terra Bella Avenue, Mountain View, CA 94043, USA

U.S. Technical Support: techUS@takarabio.com

**United States/Canada**

800.662.2566

**Asia Pacific**

+1.650.919.7300

**Europe**

+33.(0)1.3904.6880

**Japan**

+81.(0)77.565.6999

12/3/2018