

In the interest of conserving resources, we are no longer shipping manuals with products. Please visit [www.clontech.com/manuals](http://www.clontech.com/manuals) to obtain an electronic version.

## PRODUCT: Mate & Plate™ Library - Mouse Embryo 11-day

**CATALOG No.** 630478

**LOT NUMBER:** 1108033A

### STORAGE CONDITIONS

Store all components at  $-70^{\circ}\text{C}$ .  
Do not refreeze.

### SHELF LIFE

1 year from date of receipt under proper storage conditions.

### SHIPPING CONDITIONS

Dry ice ( $-70^{\circ}\text{C}$ ).

### mRNA SOURCE

Normal, whole 11-day embryos pooled from 300 male/female Webster mice

**NOTE:** No further information on the mRNA source was made available to Clontech.

### FOR RESEARCH USE ONLY

### DESCRIPTION

Mouse embryo (11-day) cDNA library transformed into yeast strain Y187. The library can be readily mated to a *MATa* GAL4 reporter strain, such as AH109 or Y2HGold (1).

### PACKAGE CONTENTS

- 5 x 1.0 ml Mate & Plate Library - Mouse Embryo 11-day
- 1 x 1.0 ml Mate & Plate Library - Control (pGADT7-T in Y187)

### OTHER

- Matchmaker™ Gold Yeast Two-Hybrid User Manual (PT4084-1)
- pGADT7-Rec Vector Information (PT3530-5)

**CLONING VECTOR:** pGADT7-Rec

**PRIMING METHOD:** oligo-(dT)

**YEAST GENOTYPE (Y187):** *MAT $\alpha$* , *ura3-52*, *his3-200*, *ade2-101*, *trp1-901*, *leu2-3, 112*, *gal4 $\Delta$* , *gal80 $\Delta$* , *met-*, *URA3 :: GAL1<sub>UAS</sub>-GAL1<sub>TATA</sub>-LacZ*, *MEL1*

### QUALITY CONTROL DATA

#### 1. Library Construction Notes

This library was constructed using homologous recombination-mediated cloning directly in the Y187 yeast strain.

#### 2. Library Information

- |                                  |                             |
|----------------------------------|-----------------------------|
| A. Titer (yeast colonies):       | $\geq 5 \times 10^7$ cfu/ml |
| B. Number of independent clones: | $2.9 \times 10^8$           |
| C. Insert size range:            | 0.5 to $\geq 3$ kb          |

The insert size range is determined by examination of an agarose/EtBr gel of the cDNA prior to cloning.



**Clontech**

United States/Canada  
800.662.2566

Asia Pacific  
+1.650.919.7300

Europe  
+33.(0)1.3904.6880

Japan  
+81.(0)77.543.6116

Clontech Laboratories, Inc.  
A Takara Bio Company  
1290 Terra Bella Ave.  
Mountain View, CA 94043  
Technical Support (US)  
E-mail: [tech@clontech.com](mailto:tech@clontech.com)  
[www.clontech.com](http://www.clontech.com)

Continued on back of page.

(PA8Y2975)

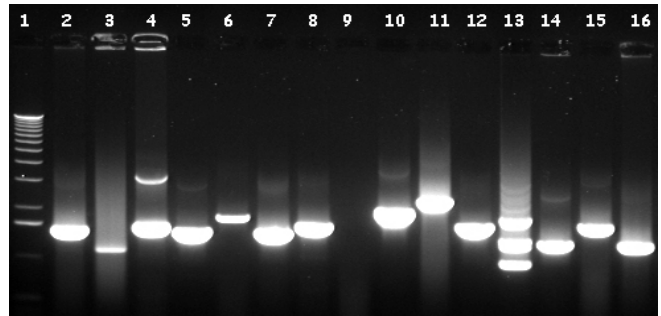
## QUALITY CONTROL DATA continued

**3. Library Insert Size Range Analysis**

15 yeast colonies were randomly picked and then screened by PCR using the Matchmaker™ AD LD-Insert Screening Amplimer Set (Cat. No. 630433)

14 of 15 colonies contained inserts as determined by PCR.

Lane 1. 1-kb DNA ladder  
2. 1.37 kb  
3. 1.17 kb  
4. 1.41 kb  
5. 1.25 kb  
6. 1.75 kb  
7. 1.29 kb  
8. 1.33 kb  
9. No insert  
10. 1.55 kb  
11. 1.98 kb  
12. 1.37 kb  
13. 1.42 kb  
14. 1.10 kb  
15. 1.29 kb  
16. 1.07 kb

**REFERENCES**

1. Pretransformed Mate & Plate™ Libraries (January 2008) *Clontechniques* XXIV(1):X-Y.

---

## Mate & Plate™ Library - Mouse Embryo 11-day

### CATALOG NO.

630478

### NOTICE TO PURCHASER:

Our products are to be used for research purposes only. They may not be used for any other purpose, including, but not limited to, use in drugs, in vitro diagnostic purposes, therapeutics, or in humans. Our products may not be transferred to third parties, resold, modified for resale, or used to manufacture commercial products or to provide a service to third parties without prior written approval of Clontech Laboratories, Inc.

Your use of this product is also subject to compliance with the licensing requirements listed below and described on the product's web page at <http://www.clontech.com>. It is your responsibility to review, understand and adhere to any restrictions imposed by these statements.

### TRADEMARKS:

Clontech, the Clontech logo, Matchmaker, and Mate & Plate are trademarks of Clontech Laboratories, Inc.

All other marks are the property of their respective owners. Certain trademarks may not be registered in all jurisdictions. Clontech is a Takara Bio Company. ©2015 Clontech Laboratories, Inc. This document has been reviewed and approved by the Clontech Quality Assurance Department.

---

#### Clontech Laboratories, Inc.

A Takara Bio Company

1290 Terra Bella Avenue, Mountain View, CA 94043, USA

U.S. Technical Support: [tech@clontech.com](mailto:tech@clontech.com)

11/20/2015

**United States/Canada**

**Asia Pacific**

**Europe**

**Japan**

800.662.2566

+1.650.919.7300

+33.(0)1.3904.6880

+81.(0)77.543.6116