

# Certificate of Analysis

---

## Mate & Plate™ Library – Mouse Embryo 17-day

**Catalog No.**

630476

**Lot Number**

1810332A

### Description

Mouse embryo (17-day) cDNA library transformed into yeast strain Y187. The library can be readily mated to a *MATa* *GAL4* reporter strain, such as AH109 or Y2HGold (Clontech, 2008).

### Package Contents

- 5 x 1.0 ml Mate & Plate Library – Mouse Embryo 17-day
- 1 x 1.0 ml Mate & Plate Library – Control (pGADT7-T in Y187)

### Storage Conditions

- Store all components at  $-70^{\circ}\text{C}$
- Do not refreeze

### Shelf Life

- 1 year from date of receipt under proper storage conditions.

### mRNA Source

- Mouse 17-day Embryo, poly A+

### Cloning Vector

- pGADT7-Rec

### Priming Method

- oligo-(dT)

### Yeast Genotype

- Y187: *MATa*, *ura3-52*, *his3-200*, *ade2-101*, *trp1-901*, *leu2-3, 112*, *gal4Δ*, *gal80Δ*, *met-*, *URA3 :: GAL1<sub>UAS</sub>-GAL1<sub>TATA</sub>-LacZ*, *MEL1*

### Shipping Conditions

- Dry ice ( $-70^{\circ}\text{C}$ )

### Product Documents

Documents for our products are available for download at [takarabio.com/manuals](http://takarabio.com/manuals)

The following documents apply to this product:

- Matchmaker® Gold Yeast Two-Hybrid System User Manual (PT4084-1)
- pGADT7-Rec Vector Information (PT3530-5)

### References

Pretransformed Mate & Plate Libraries (January 2008) Clontech **XXiV**(1):X-Y.

---

**Takara Bio USA, Inc.**

1290 Terra Bella Avenue, Mountain View, CA 94043, USA

U.S. Technical Support: [techUS@takarabio.com](mailto:techUS@takarabio.com)

United States/Canada  
800.662.2566  
(120318)

Asia Pacific  
+1.650.919.7300

Europe  
+33.(0)1.3904.6880

Japan  
+81.(0)77.565.6999

Quality Control Data

1. Library Construction Notes

This library was constructed using homologous recombination-mediated cloning directly in the Y187 yeast strain.

2. Library Information

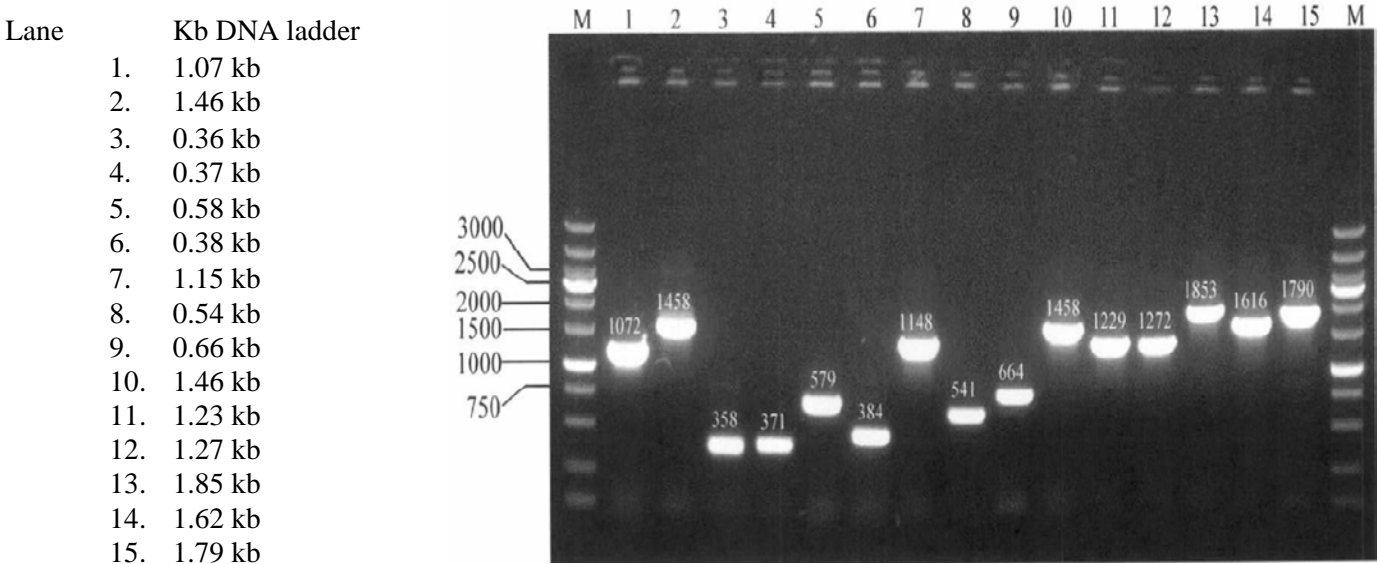
Test	Result
Titer (yeast colonies)	<u><math>\geq 5 \times 10^7</math></u> cfu/ml
Number of independent clones	<u><math>1.2 \times 10^6</math></u>
Insert size range*	<u>0.3 – 1.8 kb</u>

\*the insert size range is determined by examination of an agarose/EtBr gel of the cDNA prior to cloning.

3. Library Insert Size Range Analysis

15 yeast colonies were randomly picked and screened by PCR using the Matchmaker AD LD-Insert Screening Amplimer Set (Cat. No. 630433).

15 of 15 colonies contained inserts as determined by PCR.



It is certified that this product meets the above specifications, as reviewed and approved by the Quality Department.

## Mate & Plate™ Library - Mouse Embryo 17-day

### CATALOG NO.

630476

### NOTICE TO PURCHASER:

Our products are to be used for **Research Use Only**. They may not be used for any other purpose, including, but not limited to, use in humans, therapeutic or diagnostic use, or commercial use of any kind. Our products may not be transferred to third parties, resold, modified for resale, or used to manufacture commercial products or to provide a service to third parties without our prior written approval.

Your use of this product is also subject to compliance with the licensing requirements, listed below if applicable, and described on the product's web page at <http://www.takarabio.com>. It is your responsibility to review, understand and adhere to any restrictions imposed by these statements.

### TRADEMARKS:

**©2019 Takara Bio Inc. All Rights Reserved.**

All trademarks are the property of Takara Bio Inc. or its affiliate(s) in the U.S. and/or other countries or their respective owners. Certain trademarks may not be registered in all jurisdictions.

---

#### Takara Bio USA, Inc.

1290 Terra Bella Avenue, Mountain View, CA 94043, USA

U.S. Technical Support: [techUS@takarabio.com](mailto:techUS@takarabio.com)

#### United States/Canada

800.662.2566

#### Asia Pacific

+1.650.919.7300

#### Europe

+33.(0)1.3904.6880

#### Japan

+81.(0)77.565.6999

4/1/2019

## Mate & Plate™ Library - Mouse Embryo 17-day

### CATALOG NO.

630476

### NOTICE TO PURCHASER:

Our products are to be used for **Research Use Only**. They may not be used for any other purpose, including, but not limited to, use in humans, therapeutic or diagnostic use, or commercial use of any kind. Our products may not be transferred to third parties, resold, modified for resale, or used to manufacture commercial products or to provide a service to third parties without our prior written approval.

Your use of this product is also subject to compliance with the licensing requirements, listed below if applicable, and described on the product's web page at <http://www.takarabio.com>. It is your responsibility to review, understand and adhere to any restrictions imposed by these statements.

### TRADEMARKS:

#### ©2019 Takara Bio Inc. All Rights Reserved.

All trademarks are the property of Takara Bio Inc. or its affiliate(s) in the U.S. and/or other countries or their respective owners. Certain trademarks may not be registered in all jurisdictions.

---

#### Takara Bio USA, Inc.

1290 Terra Bella Avenue, Mountain View, CA 94043, USA

U.S. Technical Support: [techUS@takarabio.com](mailto:techUS@takarabio.com)

#### United States/Canada

800.662.2566

#### Asia Pacific

+1.650.919.7300

#### Europe

+33.(0)1.3904.6880

#### Japan

+81.(0)77.565.6999

4/1/2019